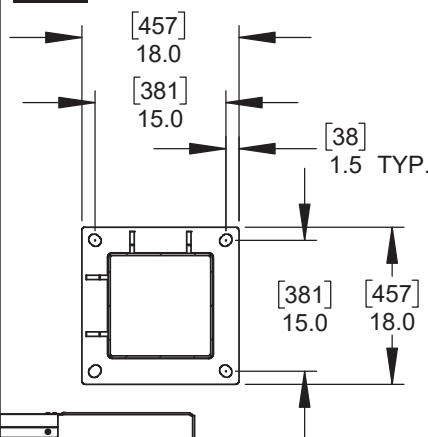
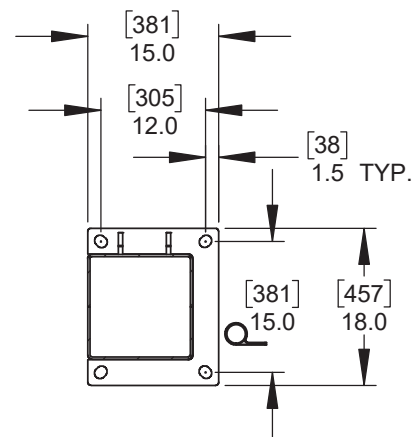


SECTION B-B - BASE PLATE OPTIONS

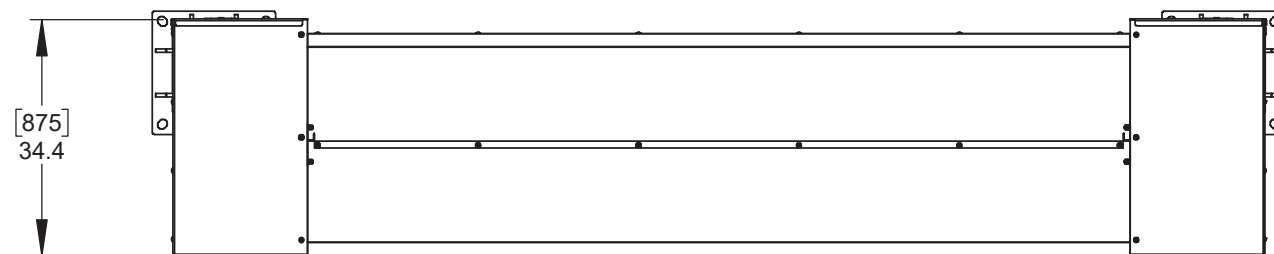
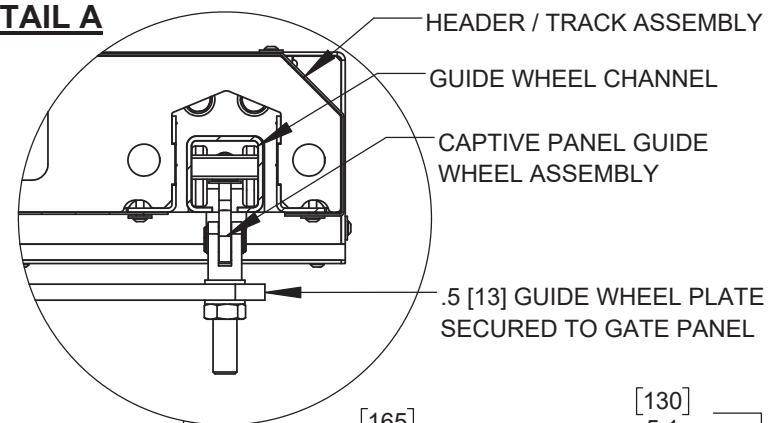
B-B1 - STANDARD



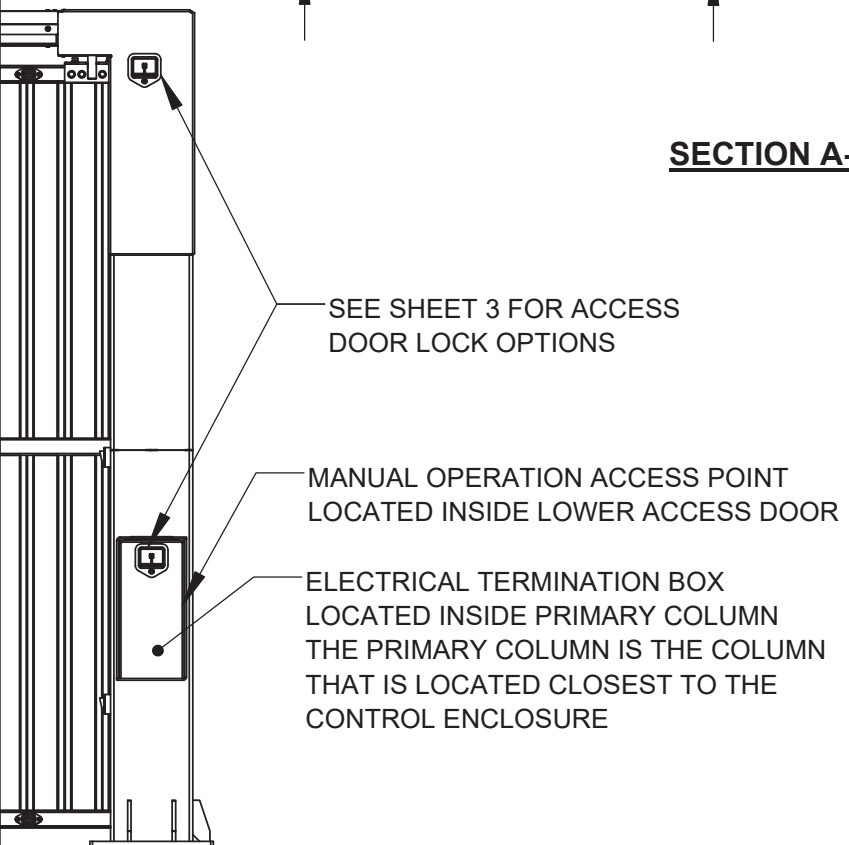
B-B2 - OFFSET



DETAIL A



SECTION A-A



SEE SHEET 3 FOR ACCESS DOOR LOCK OPTIONS

MANUAL OPERATION ACCESS POINT LOCATED INSIDE LOWER ACCESS DOOR

ELECTRICAL TERMINATION BOX LOCATED INSIDE PRIMARY COLUMN THE PRIMARY COLUMN IS THE COLUMN THAT IS LOCATED CLOSEST TO THE CONTROL ENCLOSURE

PHOTOCELLS ARE LOCATED ON INTERIOR FACE OF COLUMNS

12.0 [305] x 12.0 [305] x .25 [6] COLUMN

18.0 [457] x 18.0 [457] x 1.0 [25] BASE PLATE (REFER TO SECTION B-B ABOVE FOR OPTIONS)

2 ELECTRICAL CONTROLLERS ARE MOUNTED IN A 30.0 [762] x 30.0 [762] x 12.0 [305] NEMA 3R ENCLOSURE c/w WIRE HARNESS.

STANDARD WIRE HARNESS LENGTH ALLOWS FOR CONTROLLER ENCLOSURE TO BE PLACED UP TO 30' [9144] FROM PRIMARY COLUMN.

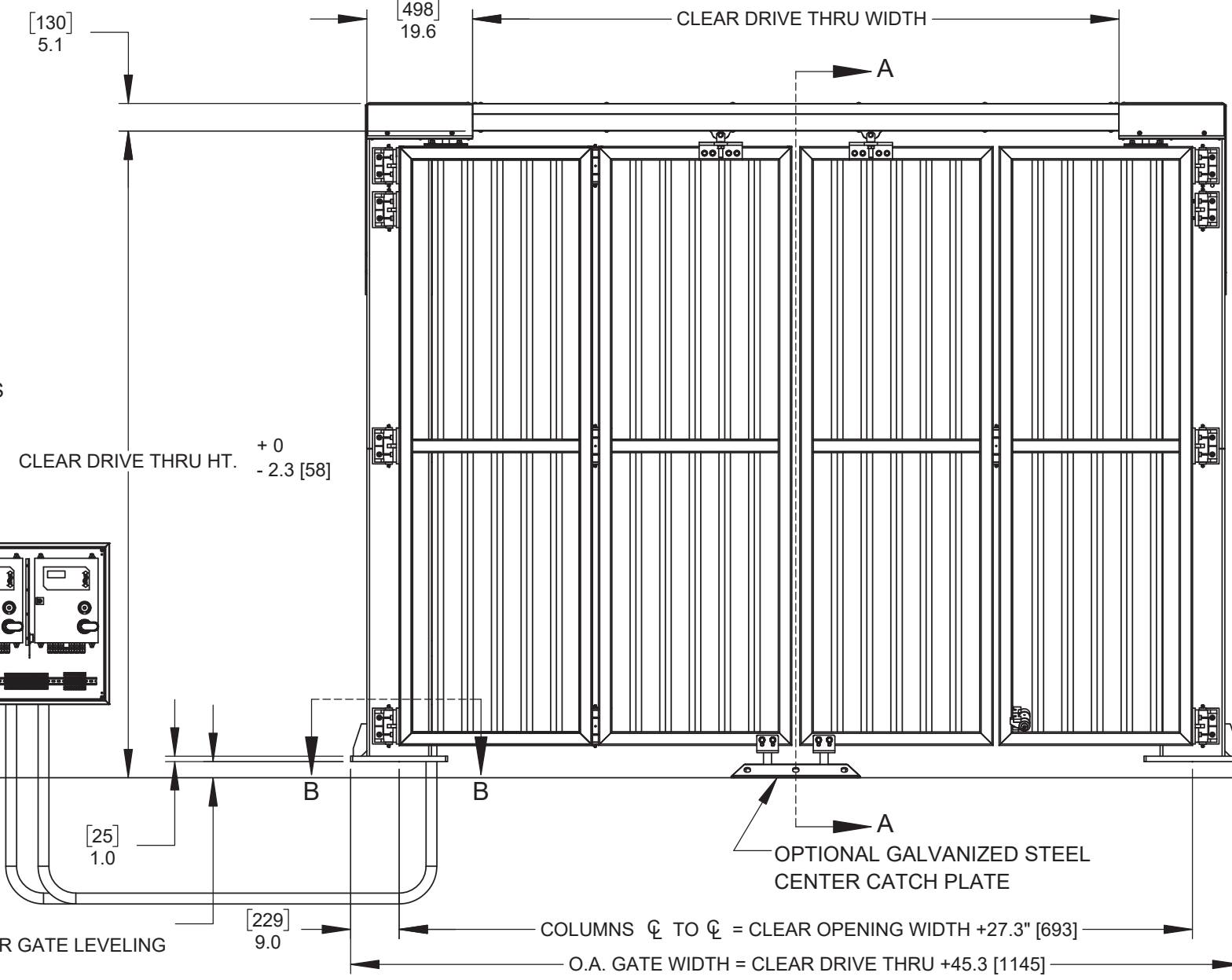
OPTIONAL EXTENDED WIRE HARNESS IS AVAILABLE WHERE CONTROLLERS ARE TO BE MOUNTED BEYOND STANDARD WIRE HARNESS LENGTH. MAXIMUM WIRE HARNESS LENGTH IS DETERMINED BY DRIVE THRU WIDTH, CONTACT WALLACE PERIMETER SECURITY FOR DETAILS. CONTROLLERS, ENCLOSURE AND WIRE HARNESS BY WALLACE PERIMETER SECURITY CONDUIT, BY OTHERS. SEE SHEET 2 FOR CONDUIT SIZES, QUANTITIES AND REQUIREMENTS.

POWER REQUIREMENTS: 240V, SINGLE PHASE, 20A

FINISH NOTES:

STANDARD FINISH: HOT DIPPED GALVANIZED ON ALL STEEL COMPONENTS
OPTIONAL POWDER COAT PAINT FINISH AVAILABLE.

NOTE: DIMENSIONS ARE SHOWN IN INCHES, DIMENSIONS SHOWN IN [] ARE IN MILLIMETERS

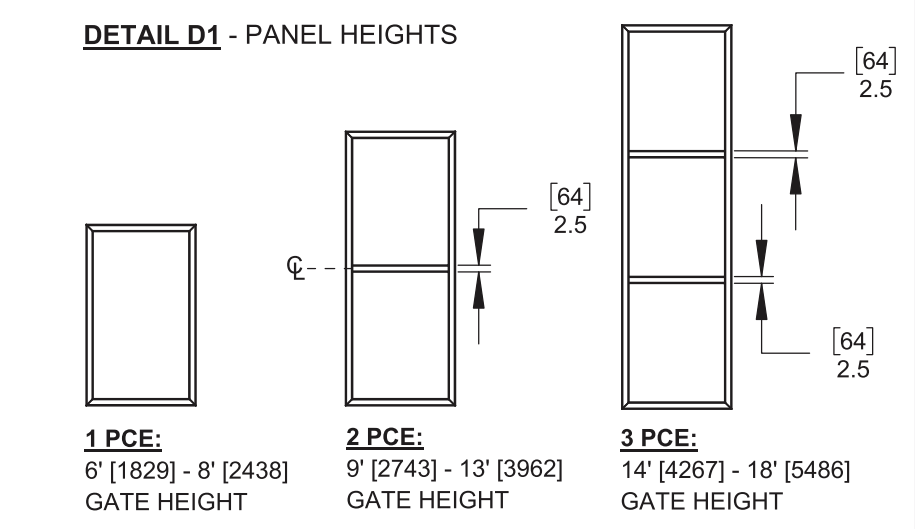
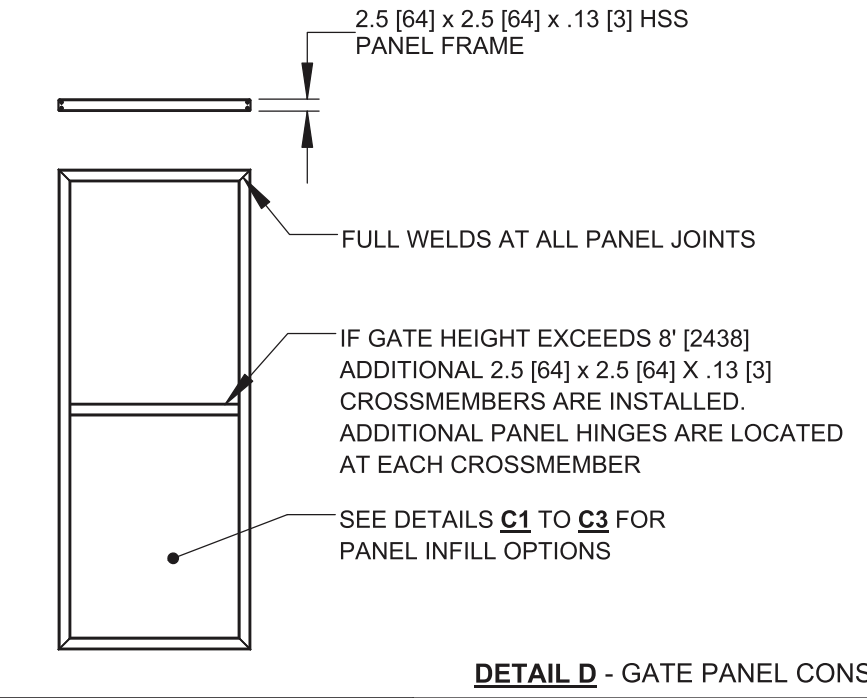
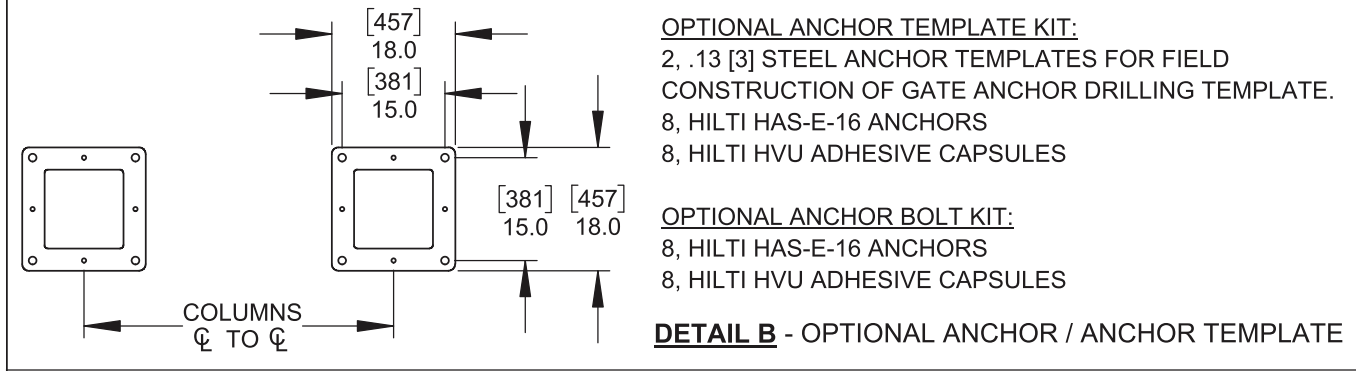
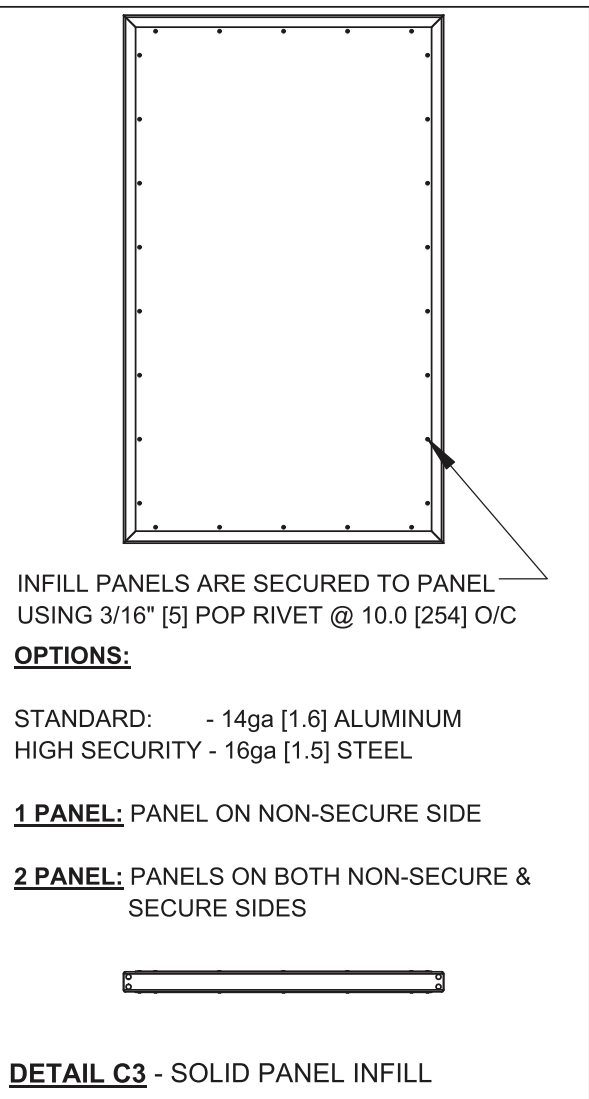
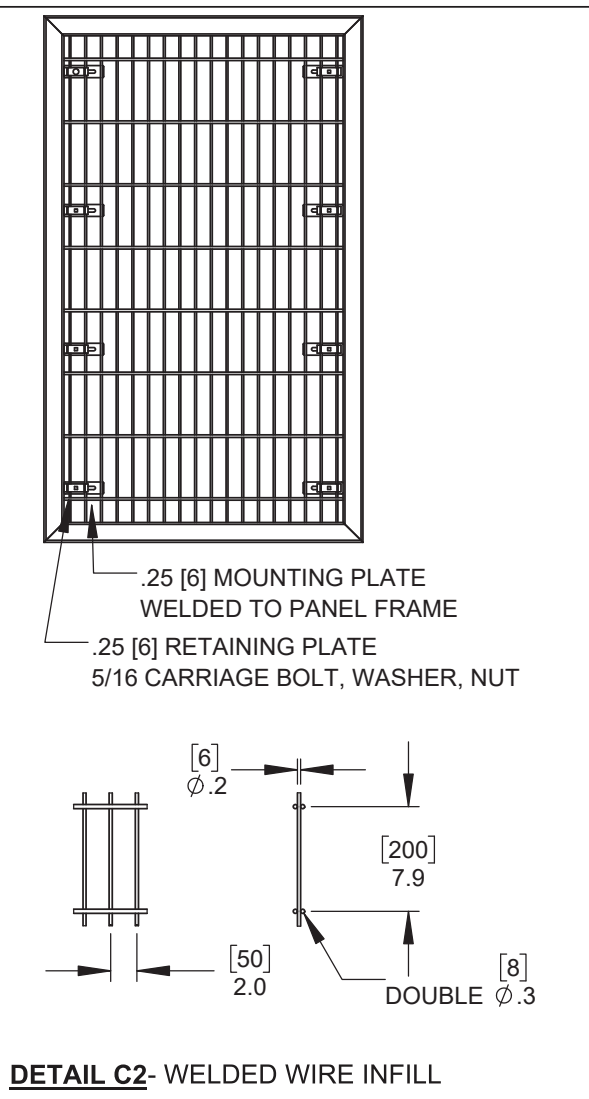
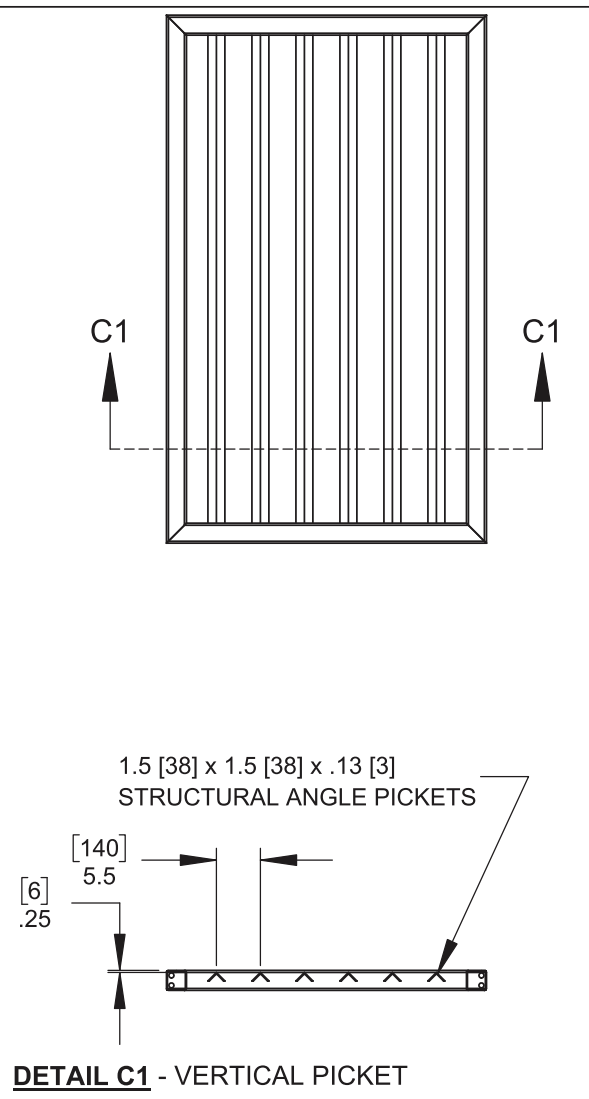
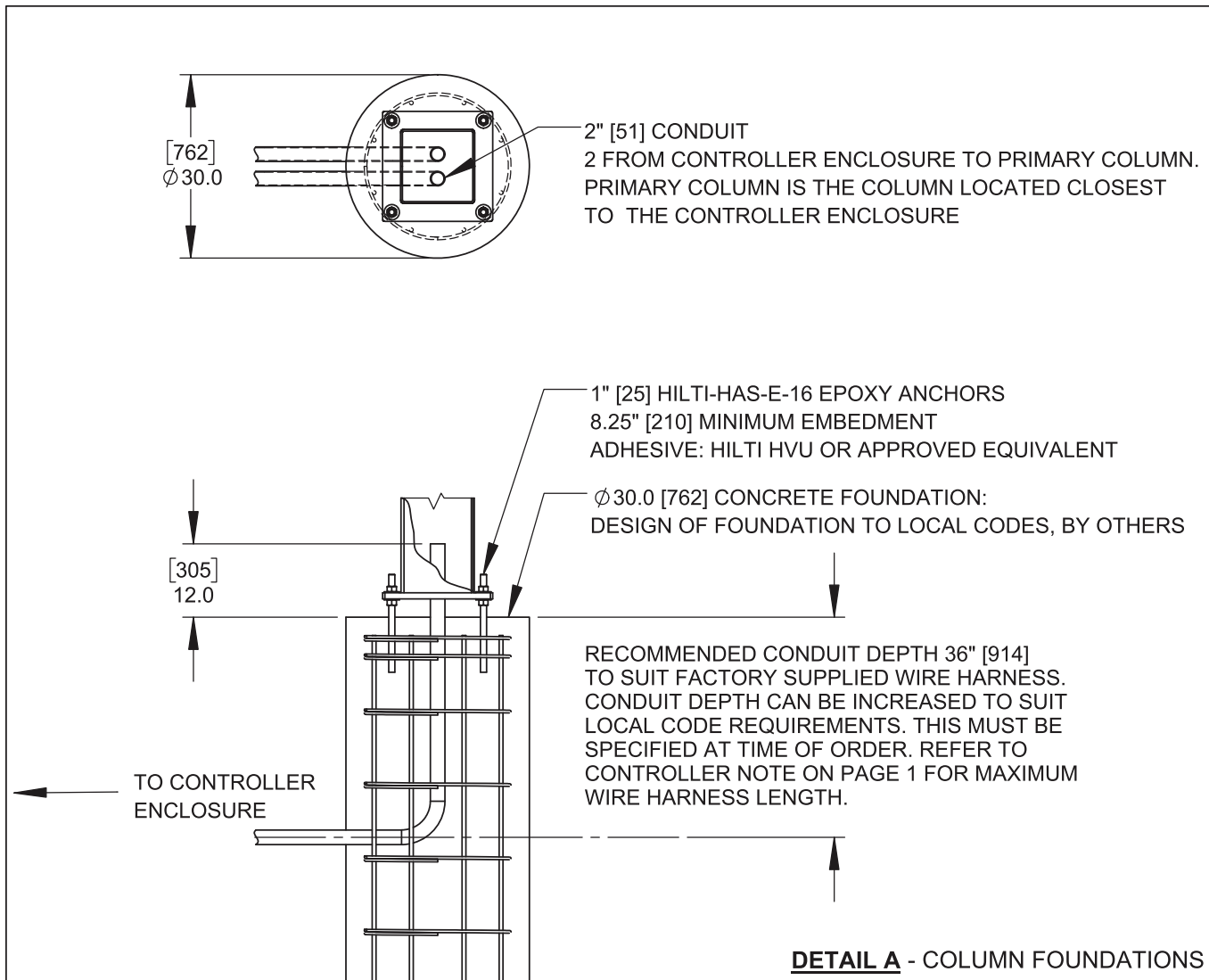


[76⁰/₋₅₈] 3.0⁺⁰/_{-2.3} FOR GATE LEVELING

COLUMNS ϕ TO ϕ = CLEAR OPENING WIDTH +27.3" [693]
O.A. GATE WIDTH = CLEAR DRIVE THRU +45.3 [1145]

Description:		PDTT POST DRIVE, TOP TRACK SPEEDGATE	
Customer / Project Name:			
Finish:	SEE FINISH NOTES	Date:	3/13/2019
Drawing No.	PDTT-03-09-18	Rev.	Sheet: 1 of 6

115 Lowson Crescent
Winnipeg, Manitoba, Canada, R3P 1A6
Phone: 1-866-300-1110
Fax: 1-204-284-1868
Web: www.wallaceperimetersecurity.com



INCLUDED WITH SPEEDGATE:

- 2 ELECTRONIC GATE CONTROLLERS MOUNTED IN A 30" [762] x 30" [762] x 12" [305] NEMA 3R ENCLOSURE.
- ELECTRICAL HARNESS TO CONNECT GATE CONTROLLERS TO DRIVE COMPONENTS.
- STANDARD WIRING HARNESS LENGTH ALLOWS FOR THE CONTROL ENCLOSURE TO BE MOUNTED UP TO 30' [9144] FROM PRIMARY COLUMN. OPTIONAL EXTENDED WIRING HARNESS IS AVAILABLE.
- CONTACT WALLACE PERIMETER SECURITY FOR DETAILS.
- KEY(S) AND LOCK(S) FOR ALL ACCESS PANELS, SEE SHEET 3, DETAILS E1 TO E4 FOR AVAILABLE LOCK OPTIONS.

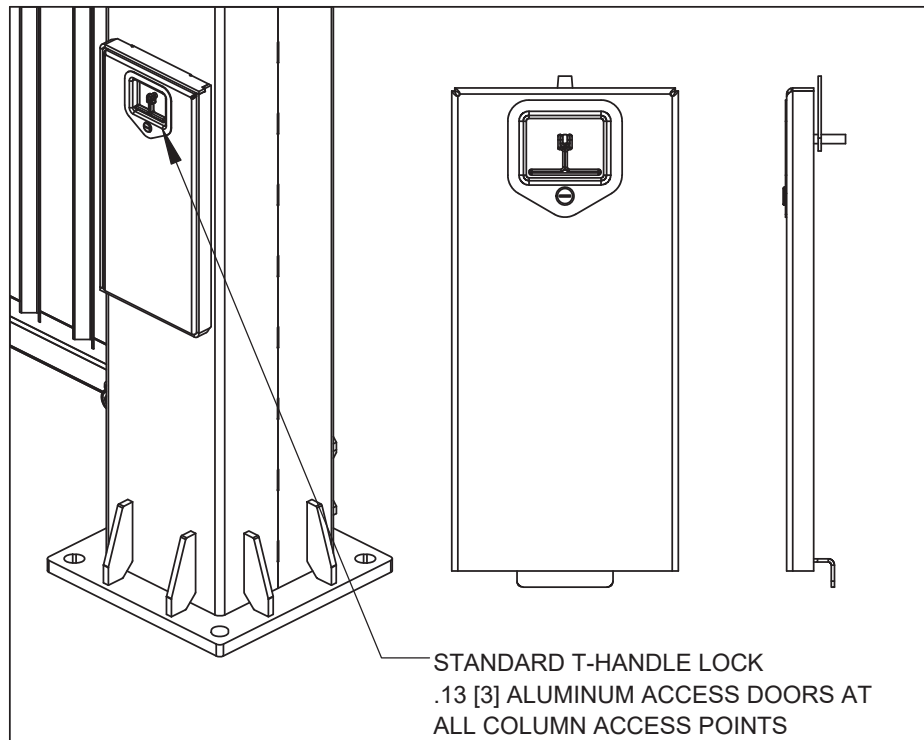
NOT INCLUDED WITH SPEEDGATE:

- GATE MOUNTING HARDWARE, OPTIONAL ANCHOR BOLT OR ANCHOR BOLT & TEMPLATE KITS AVAILABLE.
- VEHICLE DETECTION LOOPS
- GROUT TO FILL GAP UNDER COLUMN BASE PLATES WHEN GATE INSTALLATION / LEVELING IS COMPLETE

Description: PDDT POST DRIVE TOP TRACK SPEEDGATE STANDARD NOTES AND OPTIONS	
Customer / Project Name:	
Finish:	Date: 3/13/2019
Drawing No. PDDT-03-09-18	Rev. Sheet: 2 of 6

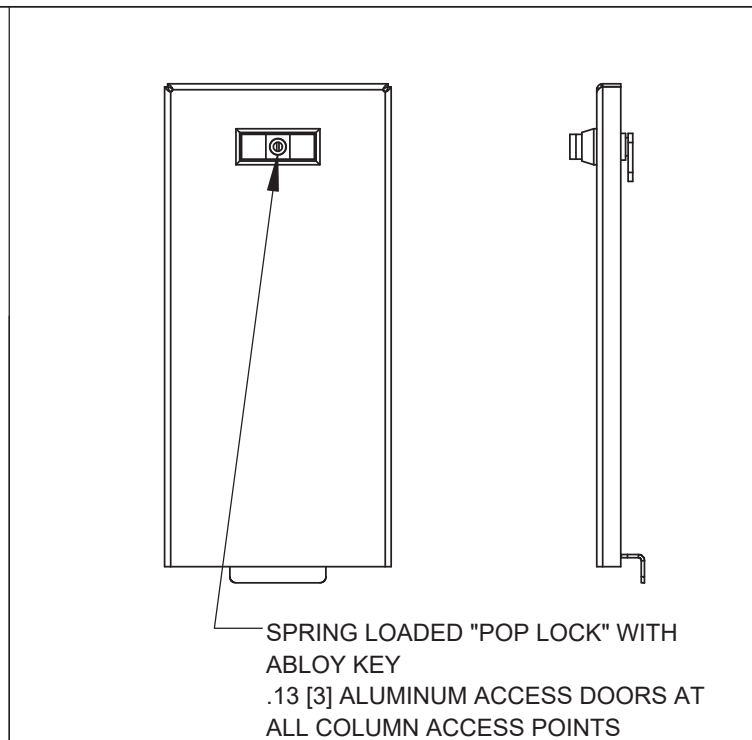
WALLACE
PERIMETER SECURITY

115 Lowson Crescent
Winnipeg, Manitoba, Canada, R3P 1A6
Phone: 1-866-300-1110
Fax: 1-204-284-1868
Web: www.wallaceperimetersecurity.com



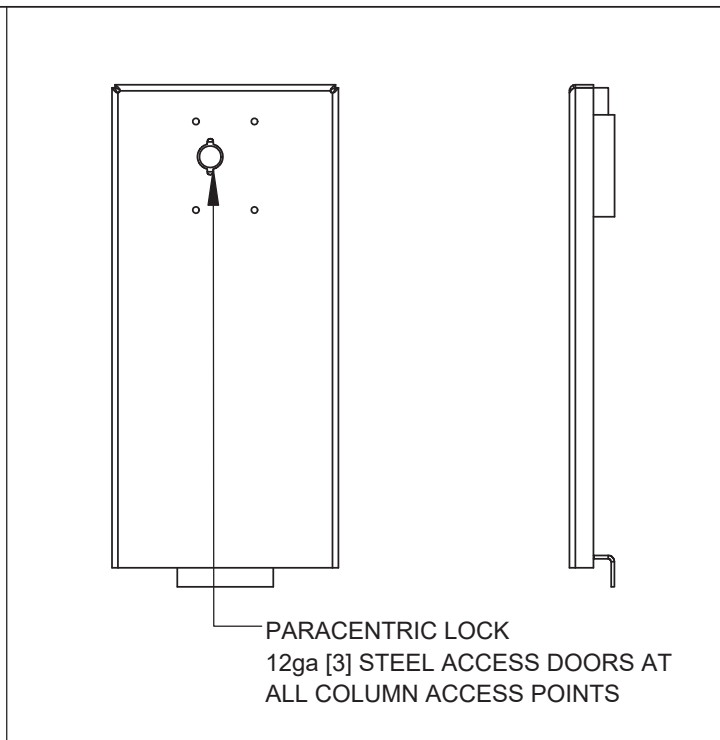
STANDARD T-HANDLE LOCK
.13 [3] ALUMINUM ACCESS DOORS AT
ALL COLUMN ACCESS POINTS

DETAIL E1
STANDARD T-HANDLE ACCESS POINT LOCK



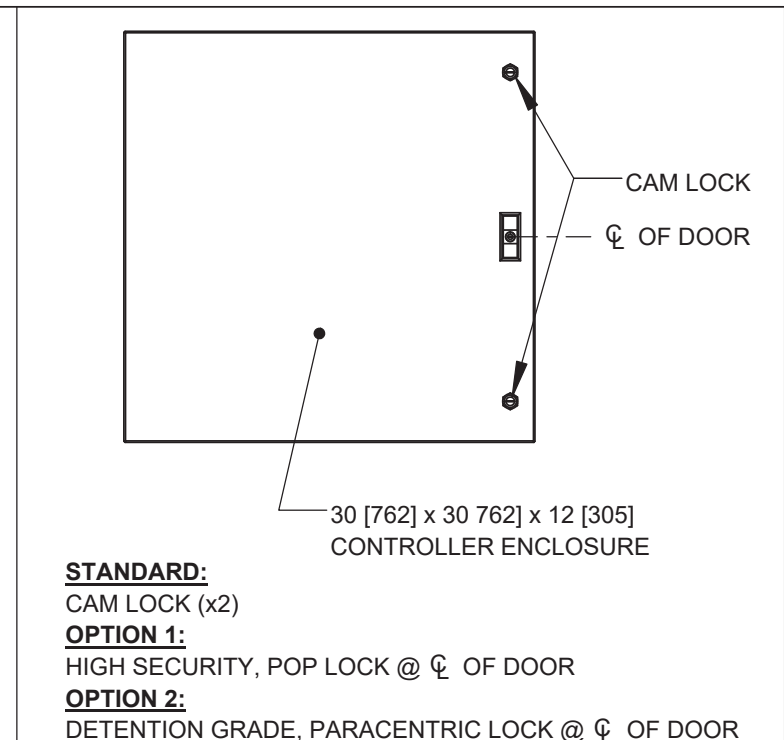
SPRING LOADED "POP LOCK" WITH
ABLOY KEY
.13 [3] ALUMINUM ACCESS DOORS AT
ALL COLUMN ACCESS POINTS

DETAIL E2
OPTIONAL HIGH SECURITY LOCK



PARACENTRIC LOCK
12ga [3] STEEL ACCESS DOORS AT
ALL COLUMN ACCESS POINTS

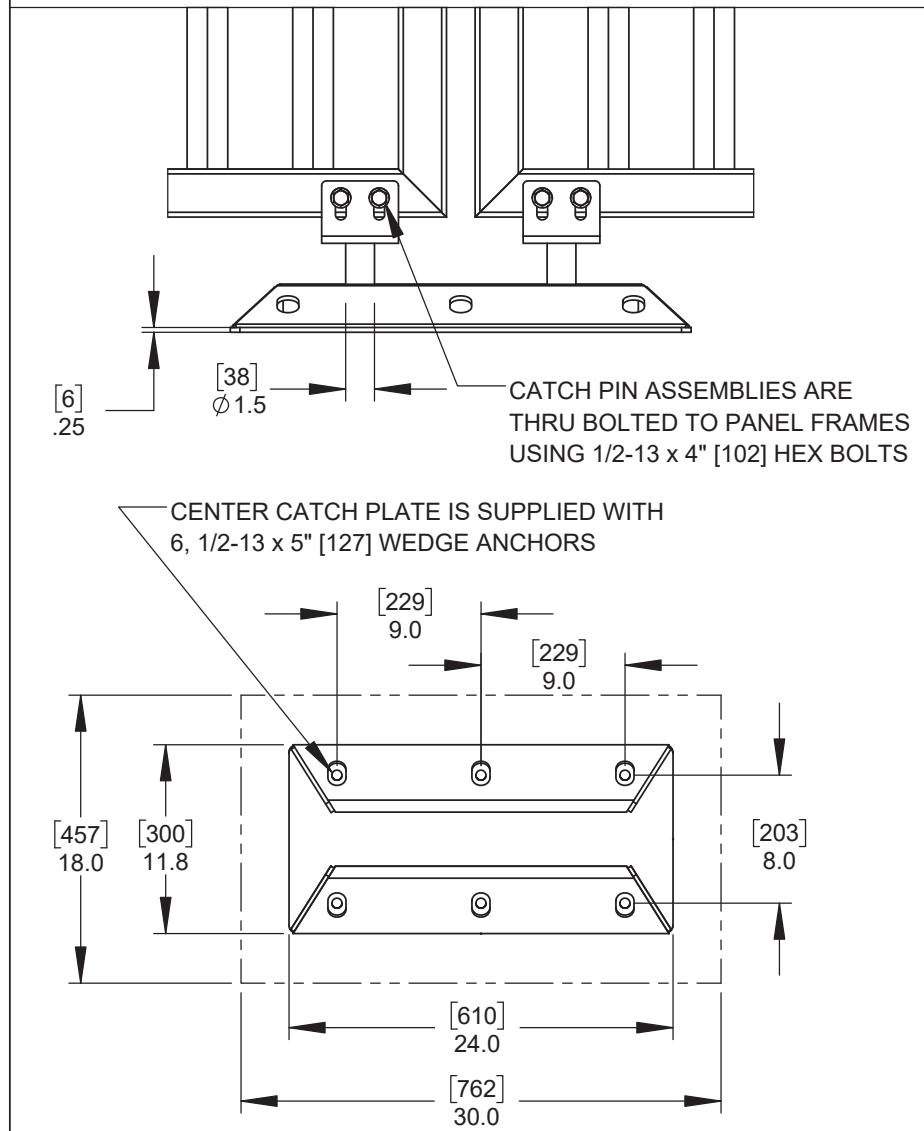
DETAIL E3
OPTIONAL DETENTION GRADE LOCK



30 [762] x 30 [762] x 12 [305]
CONTROLLER ENCLOSURE

STANDARD:
CAM LOCK (x2)
OPTION 1:
HIGH SECURITY, POP LOCK @ \varnothing OF DOOR
OPTION 2:
DETENTION GRADE, PARACENTRIC LOCK @ \varnothing OF DOOR

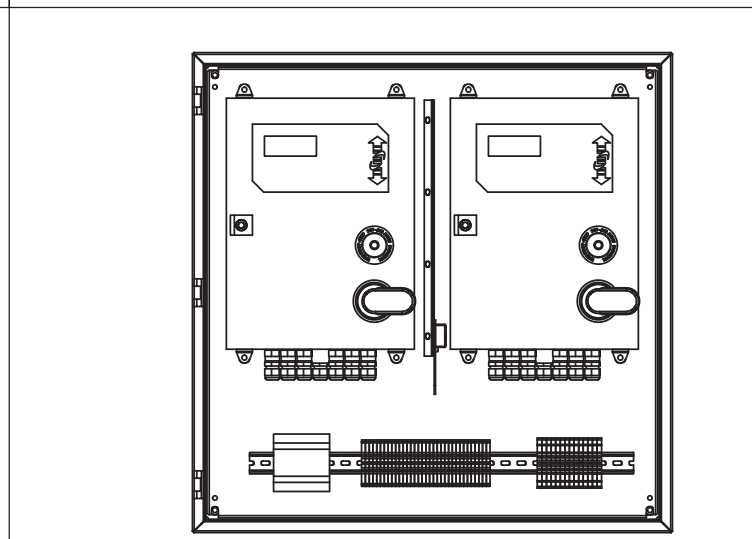
DETAIL F CONTROLLER ENCLOSURE LOCK



CATCH PIN ASSEMBLIES ARE
THRU BOLTED TO PANEL FRAMES
USING 1/2-13 x 4" [102] HEX BOLTS

CENTER CATCH PLATE IS SUPPLIED WITH
6, 1/2-13 x 5" [127] WEDGE ANCHORS

DETAIL G OPTIONAL CENTER CATCH PLATE

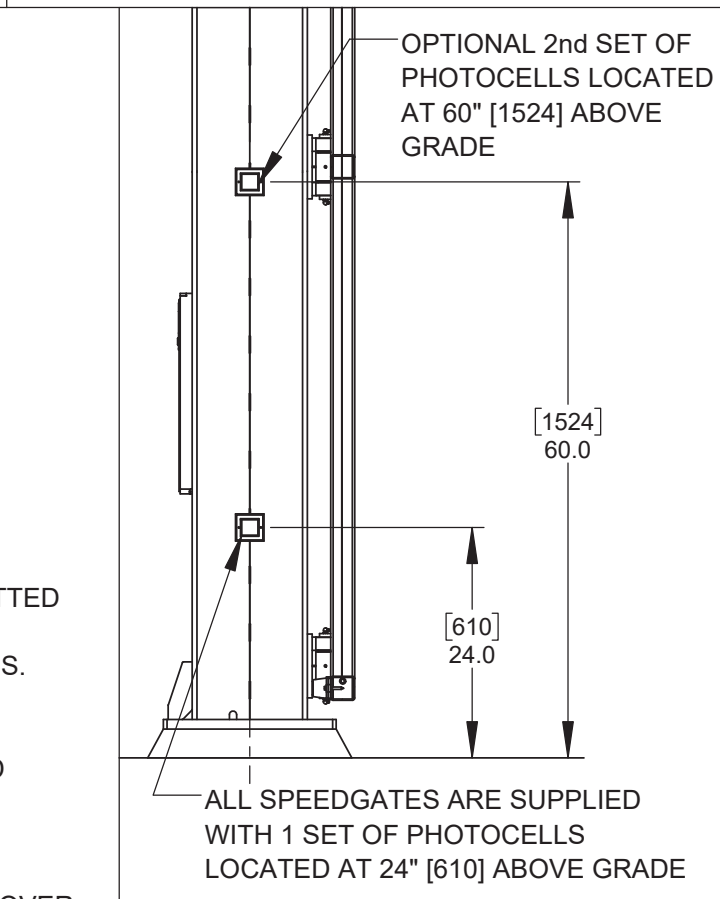


THE NEMA 3R CONTROLLER ENCLOSURE CAN BE FITTED
WITH OPTIONAL HEATING OR COOLING KITS TO
ACCOMMODATE A WIDE RANGE OF TEMPERATURES.

OPTIONAL HOT WEATHER KIT INCLUDES:
EXHAUST FAN, VENT GRILLES, RAIN SHROUDS AND
THERMOSTAT.

OPTIONAL COLD WEATHER KIT INCLUDES:
320 WATT SELF-REGULATING HEATER, THERMAL COVER.
THERMAL COVER IS ONLY AVAILABLE IF CONTROLLER
ENCLOSURE IS FREE STANDAING.

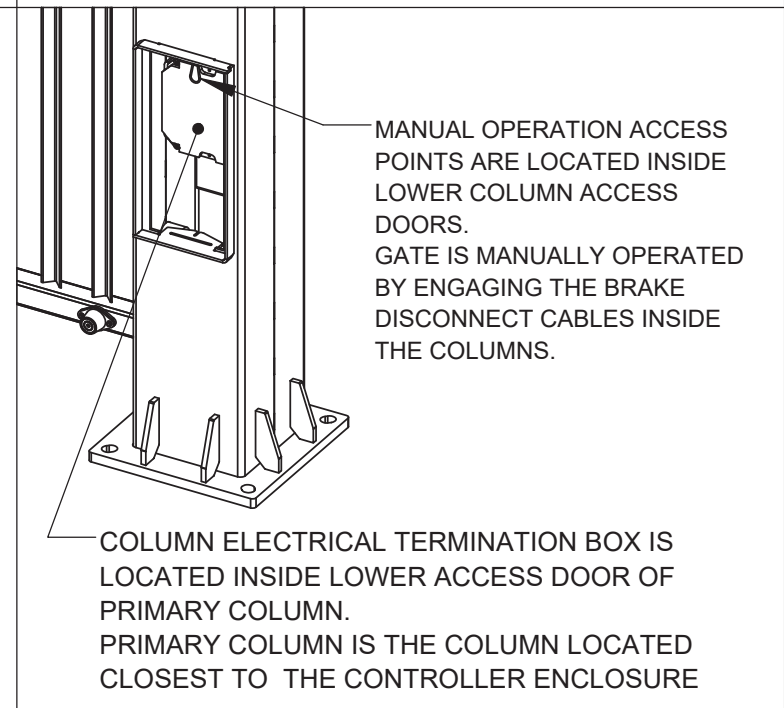
DETAIL H ENVIROMENTAL CONTROLS



OPTIONAL 2nd SET OF
PHOTOCELLS LOCATED
AT 60" [1524] ABOVE
GRADE

ALL SPEEDGATES ARE SUPPLIED
WITH 1 SET OF PHOTOCELLS
LOCATED AT 24" [610] ABOVE GRADE

DETAIL I PHOTOCELLS



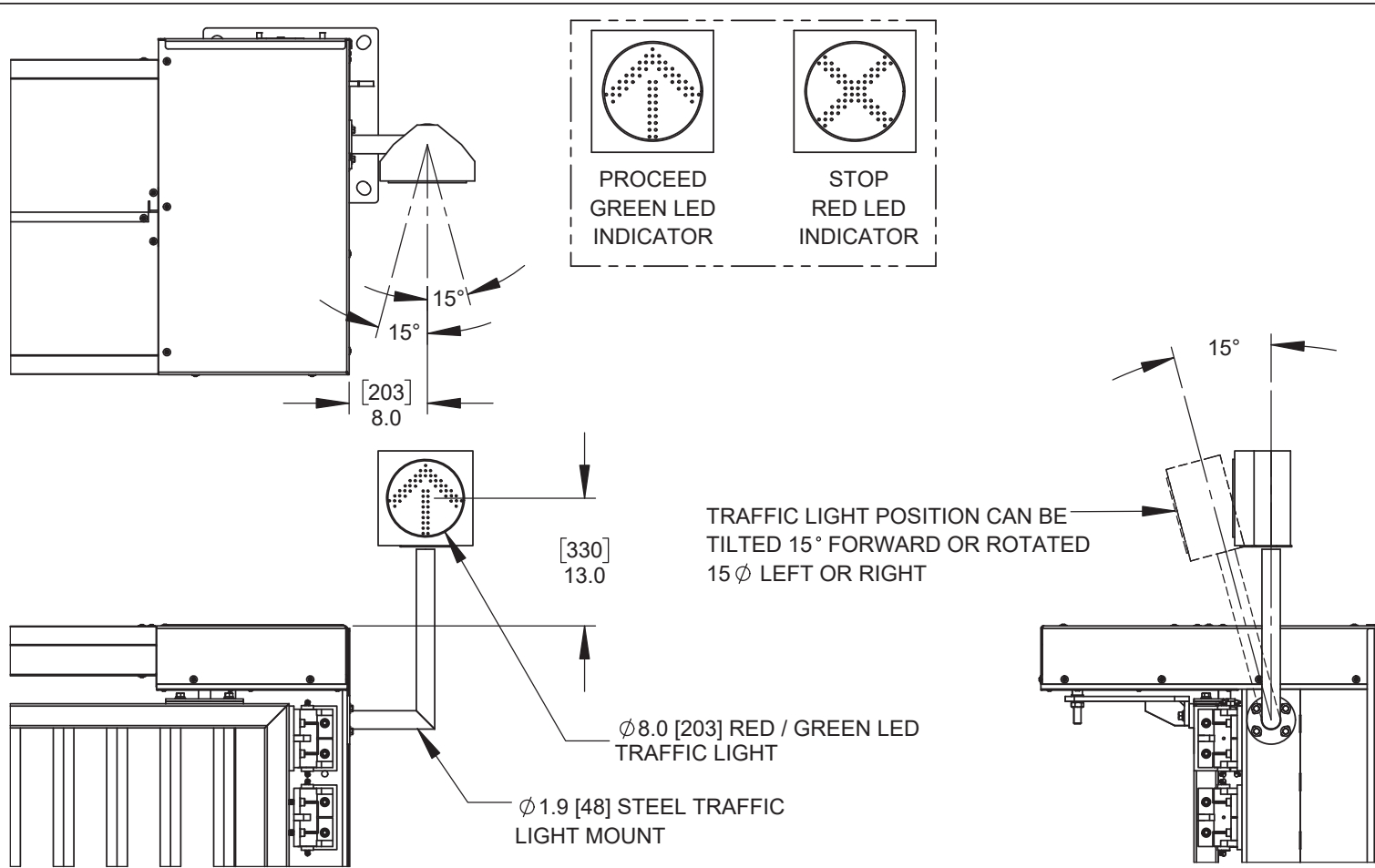
MANUAL OPERATION ACCESS
POINTS ARE LOCATED INSIDE
LOWER COLUMN ACCESS
DOORS.
GATE IS MANUALLY OPERATED
BY ENGAGING THE BRAKE
DISCONNECT CABLES INSIDE
THE COLUMNS.

COLUMN ELECTRICAL TERMINATION BOX IS
LOCATED INSIDE LOWER ACCESS DOOR OF
PRIMARY COLUMN.
PRIMARY COLUMN IS THE COLUMN LOCATED
CLOSEST TO THE CONTROLLER ENCLOSURE

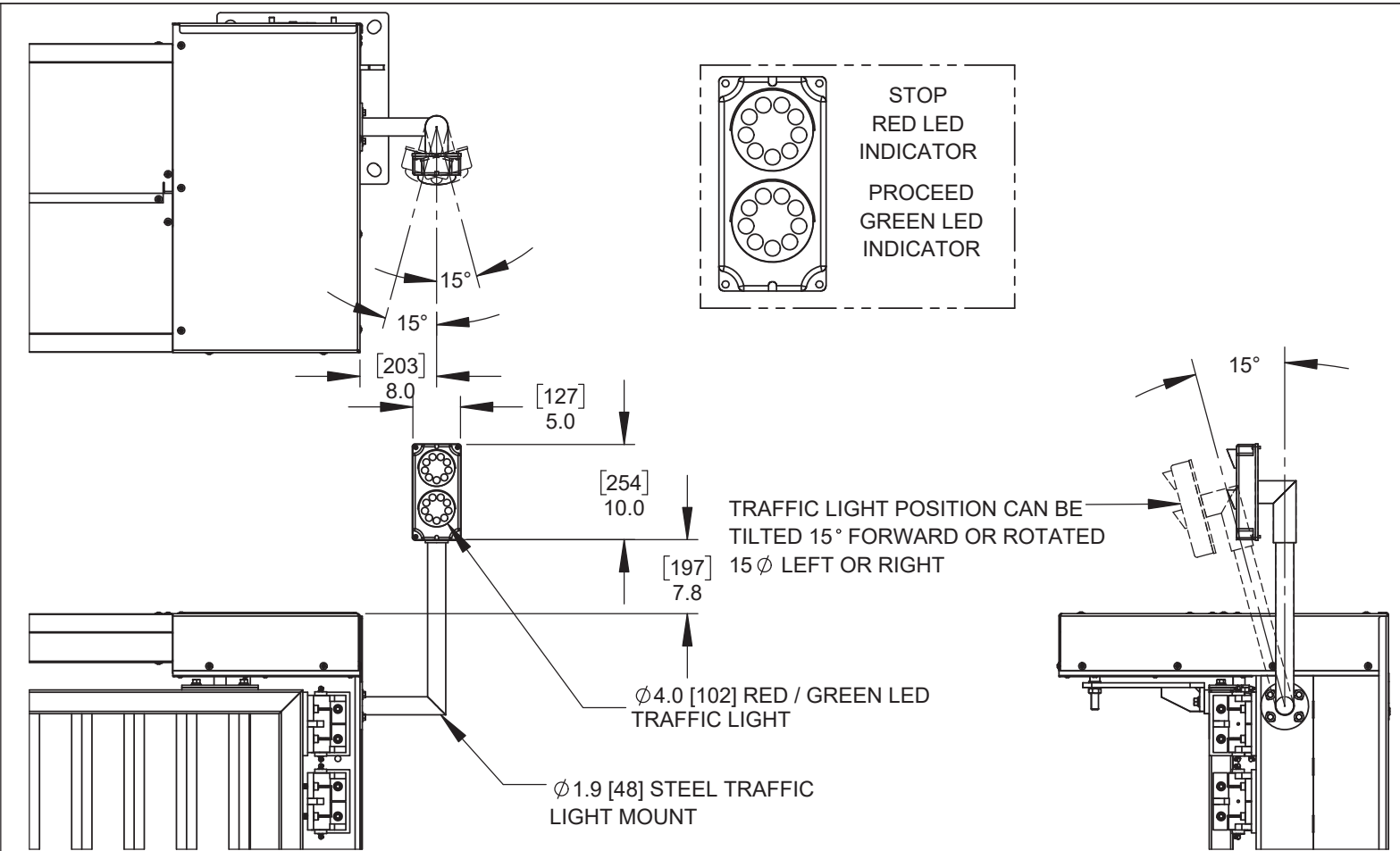
DETAIL J MANUAL OPERATION ACCESS POINT /
COLUMN ELECTRICAL TERMINATION

115 Lowson Crescent
Winnipeg, Manitoba, Canada, R3P 1A6
Phone: 1-866-300-1110
Fax: 1-204-284-1868
Web: www.wallaceperimetersecurity.com

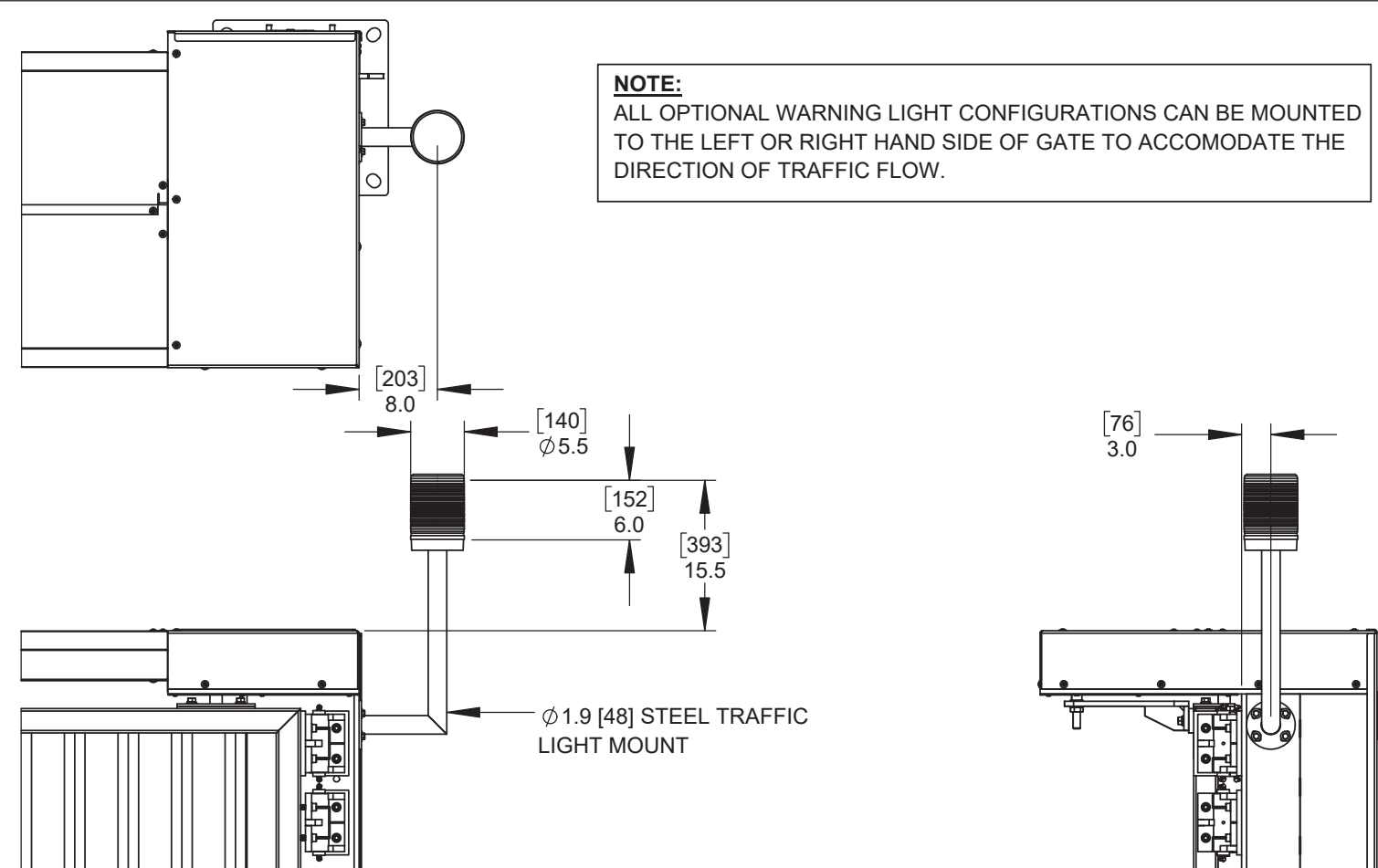
Description:		PDDT POST DRIVE TOP TRACK SPEEDGATE	
Customer / Project Name:			
Finish:	Date:	3/13/2019	
Drawing No.	Rev.	Sheet:	
PDDT-03-09-18		3 of 6	



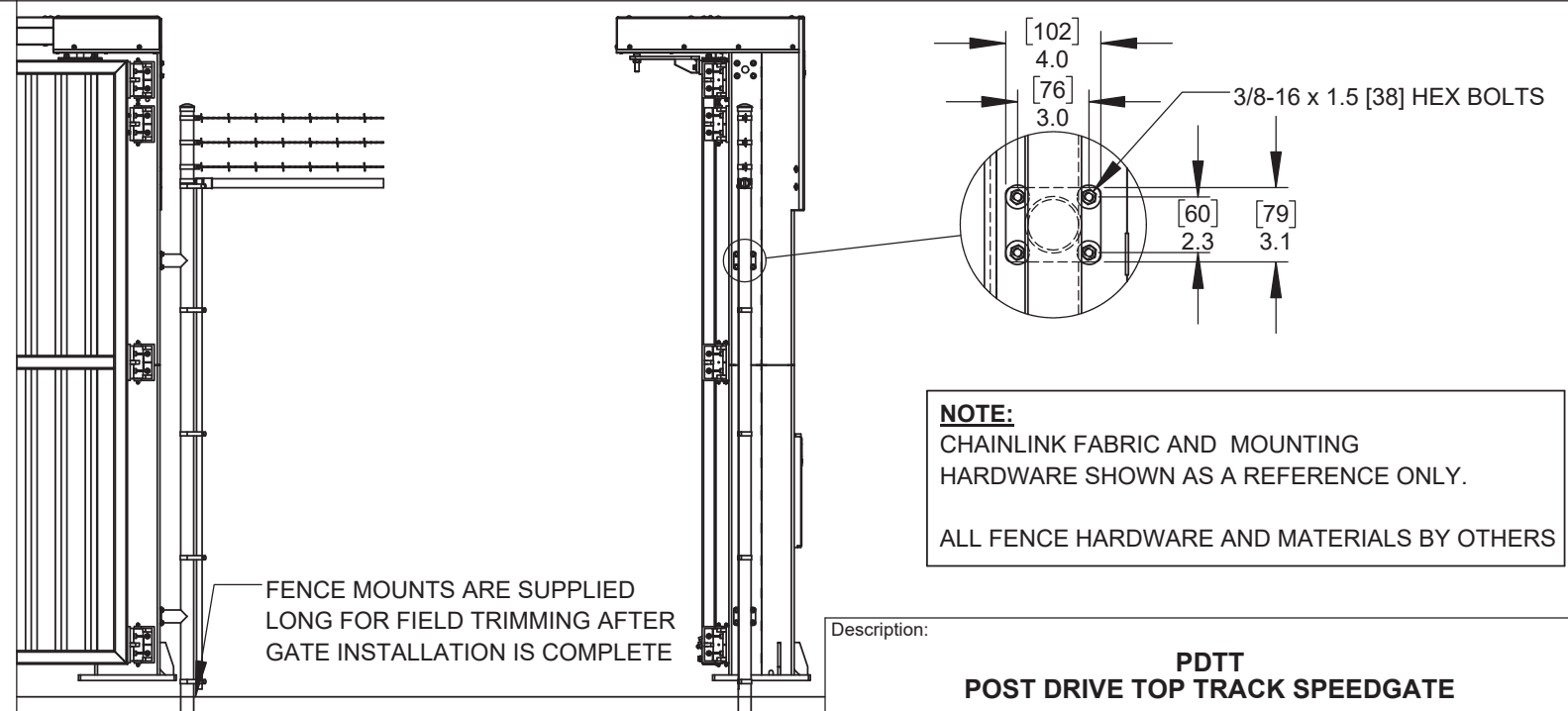
DETAIL K-1 OPTIONAL 8" [203] RED / GREEN LED TRAFFIC LIGHT



DETAIL K-2 OPTIONAL 4" [102] RED / GREEN LED TRAFFIC LIGHT



DETAIL K-3 OPTIONAL AMBER STROBE LIGHT

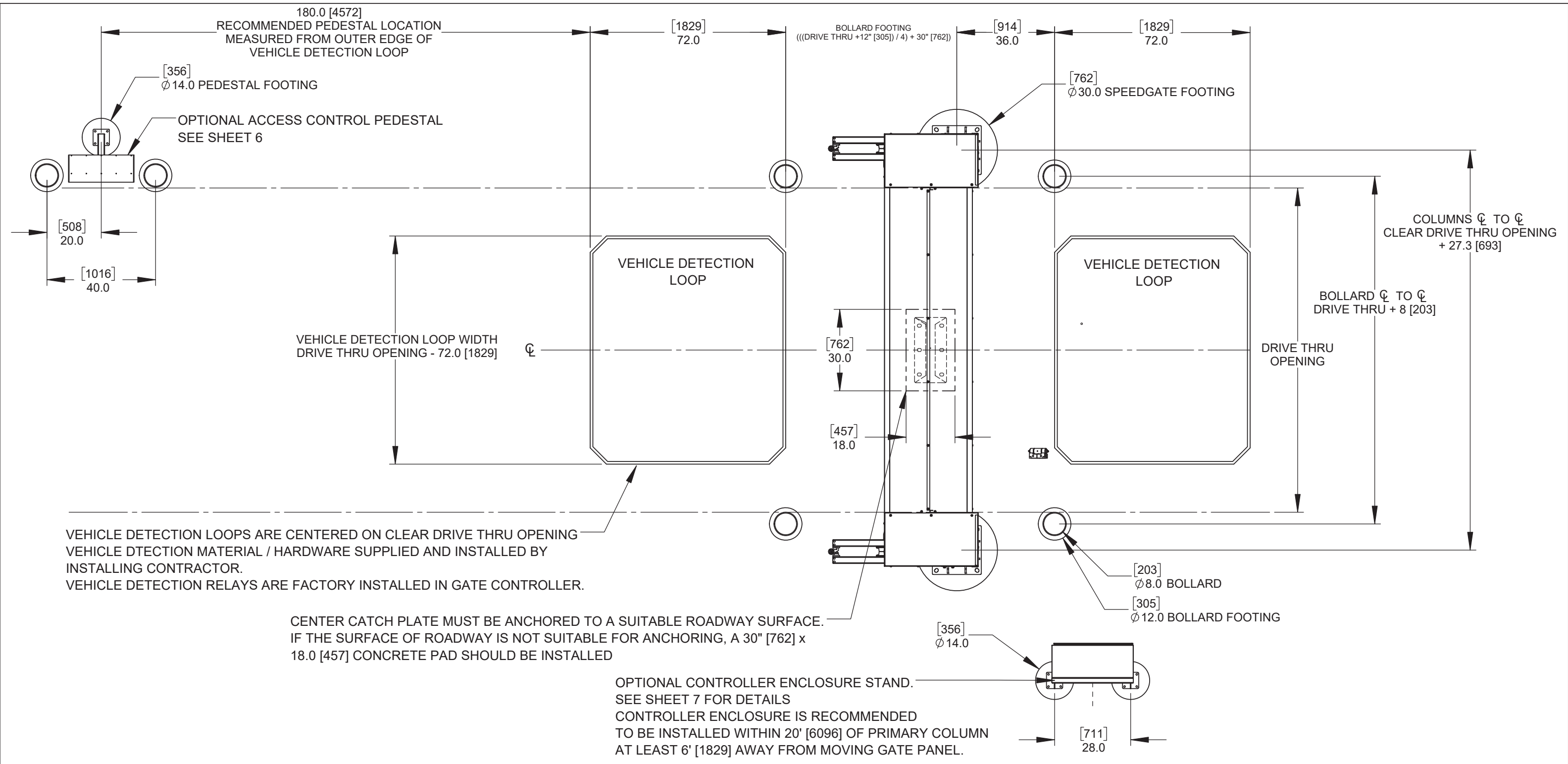


DETAIL L OPTIONAL FENCE MOUNTS

WALLACE
PERIMETER SECURITY

115 Lowson Crescent
Winnipeg, Manitoba, Canada, R3P 1A6
Phone: 1-866-300-1110
Fax: 1-204-284-1868
Web: www.wallaceperimetersecurity.com

Description:		PDDT POST DRIVE TOP TRACK SPEEDGATE	
Customer / Project Name:			
Finish:		Date:	3/13/2019
Drawing No.	PDDT-03-09-18	Rev.	Sheet: 4 of 6



VEHICLE DETECTION LOOPS ARE CENTERED ON CLEAR DRIVE THRU OPENING
 VEHICLE DETECTION MATERIAL / HARDWARE SUPPLIED AND INSTALLED BY
 INSTALLING CONTRACTOR.
 VEHICLE DETECTION RELAYS ARE FACTORY INSTALLED IN GATE CONTROLLER.

CENTER CATCH PLATE MUST BE ANCHORED TO A SUITABLE ROADWAY SURFACE.
 IF THE SURFACE OF ROADWAY IS NOT SUITABLE FOR ANCHORING, A 30" [762] x
 18.0 [457] CONCRETE PAD SHOULD BE INSTALLED

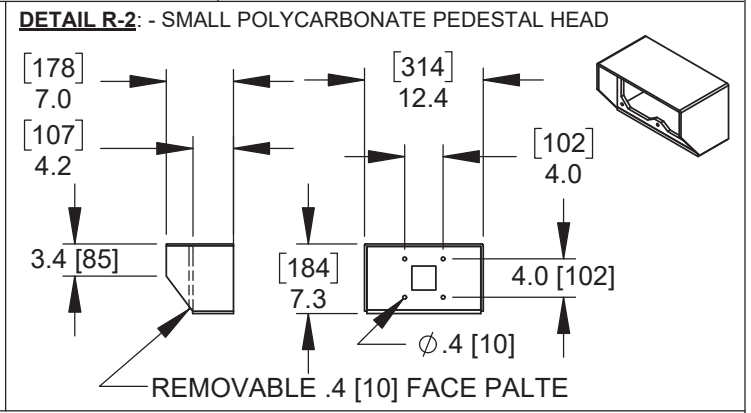
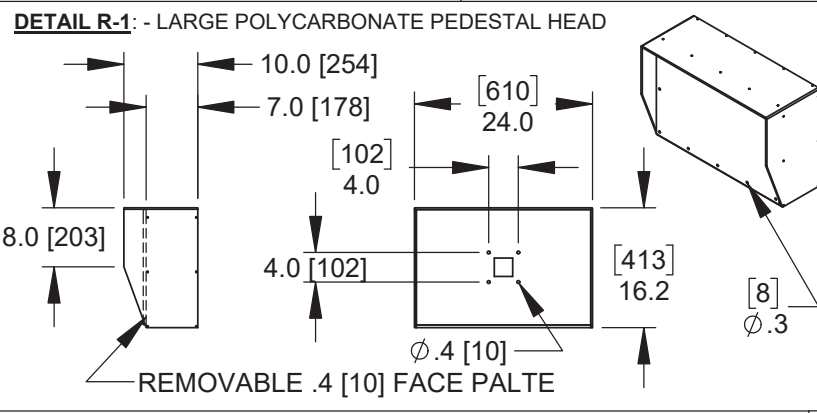
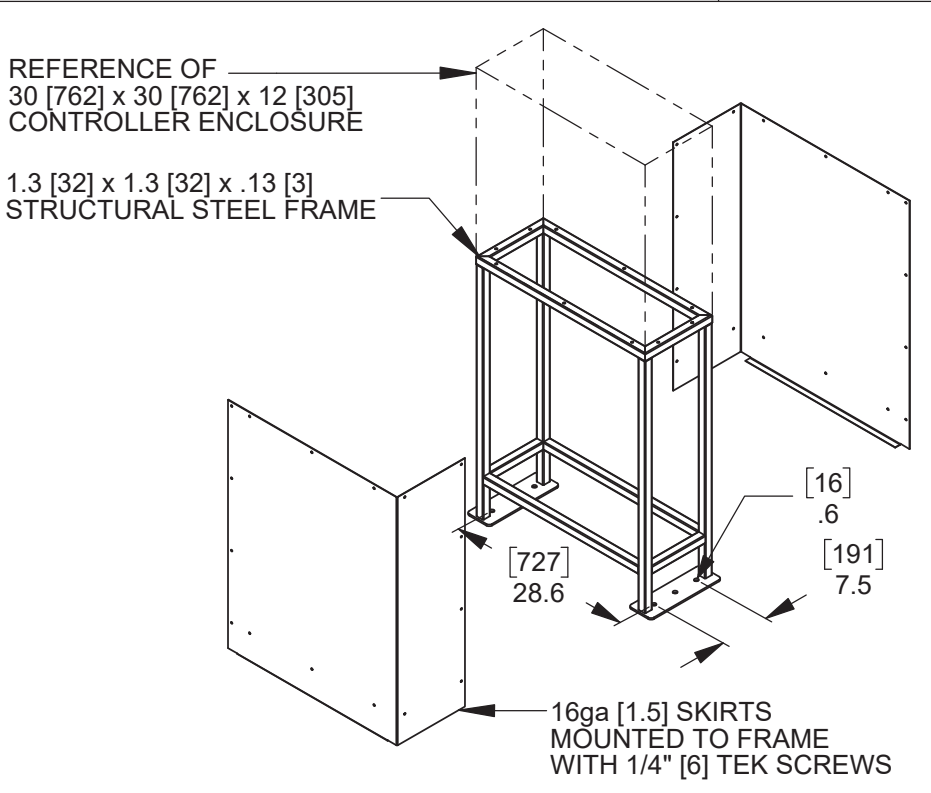
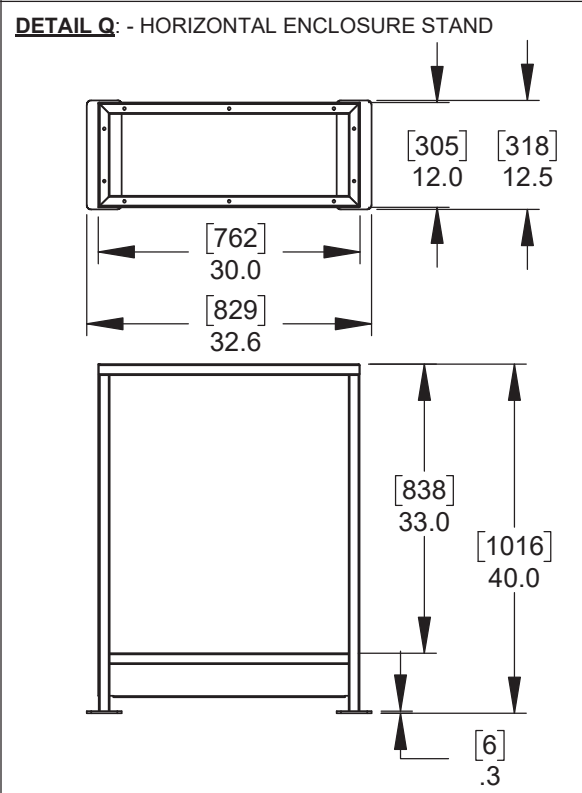
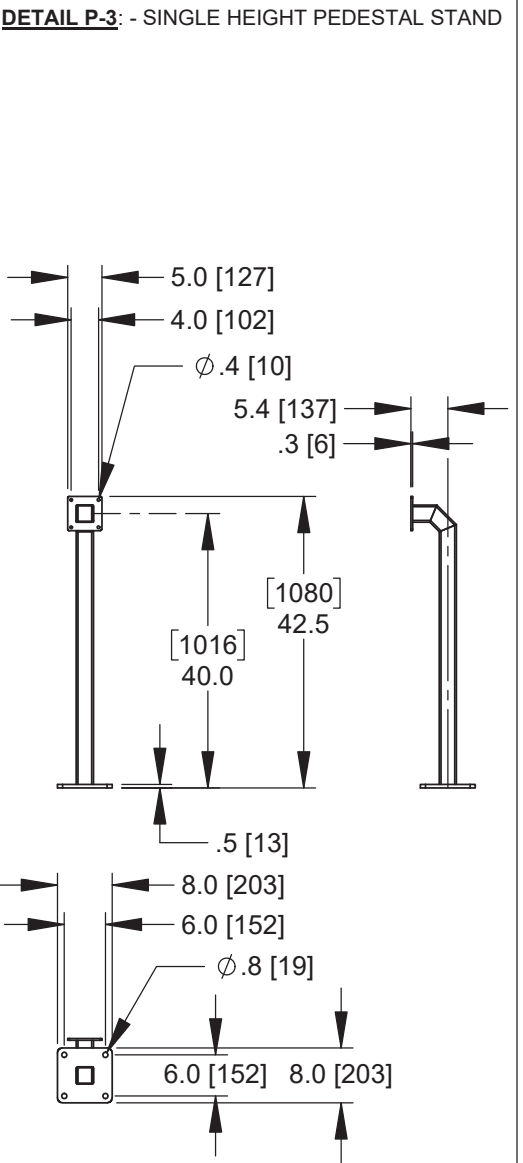
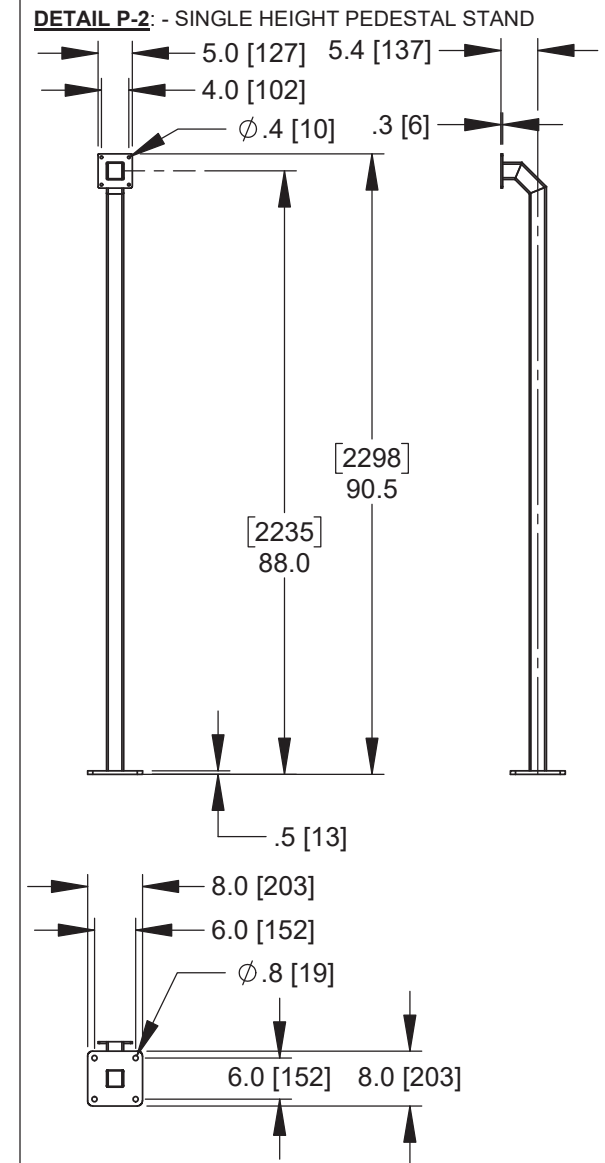
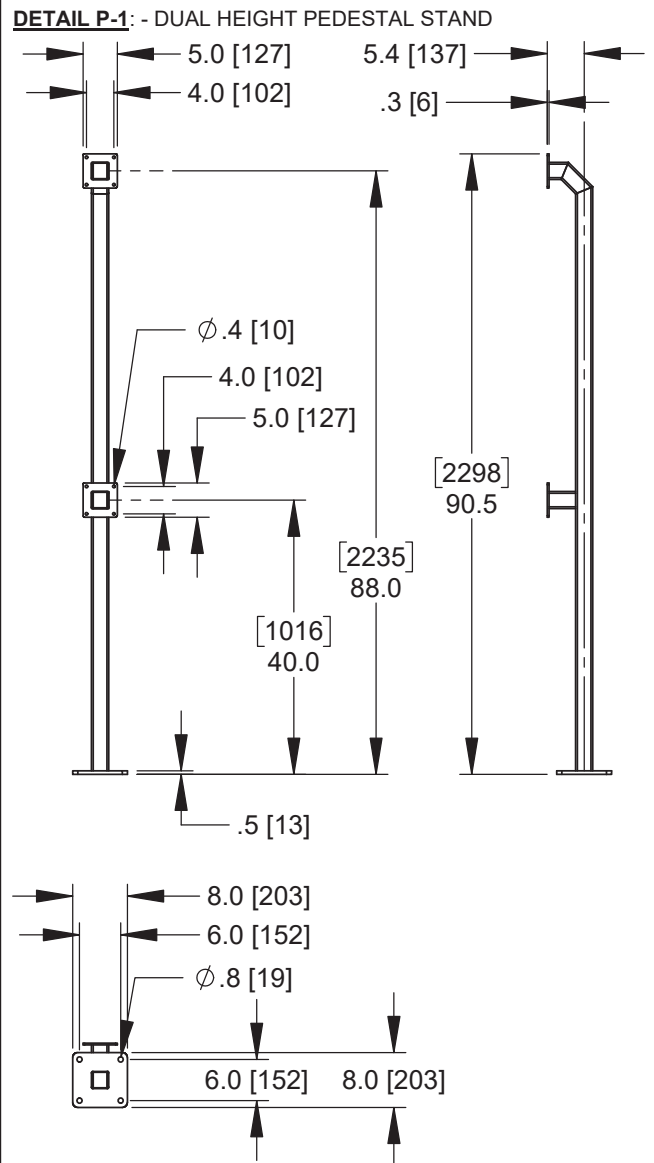
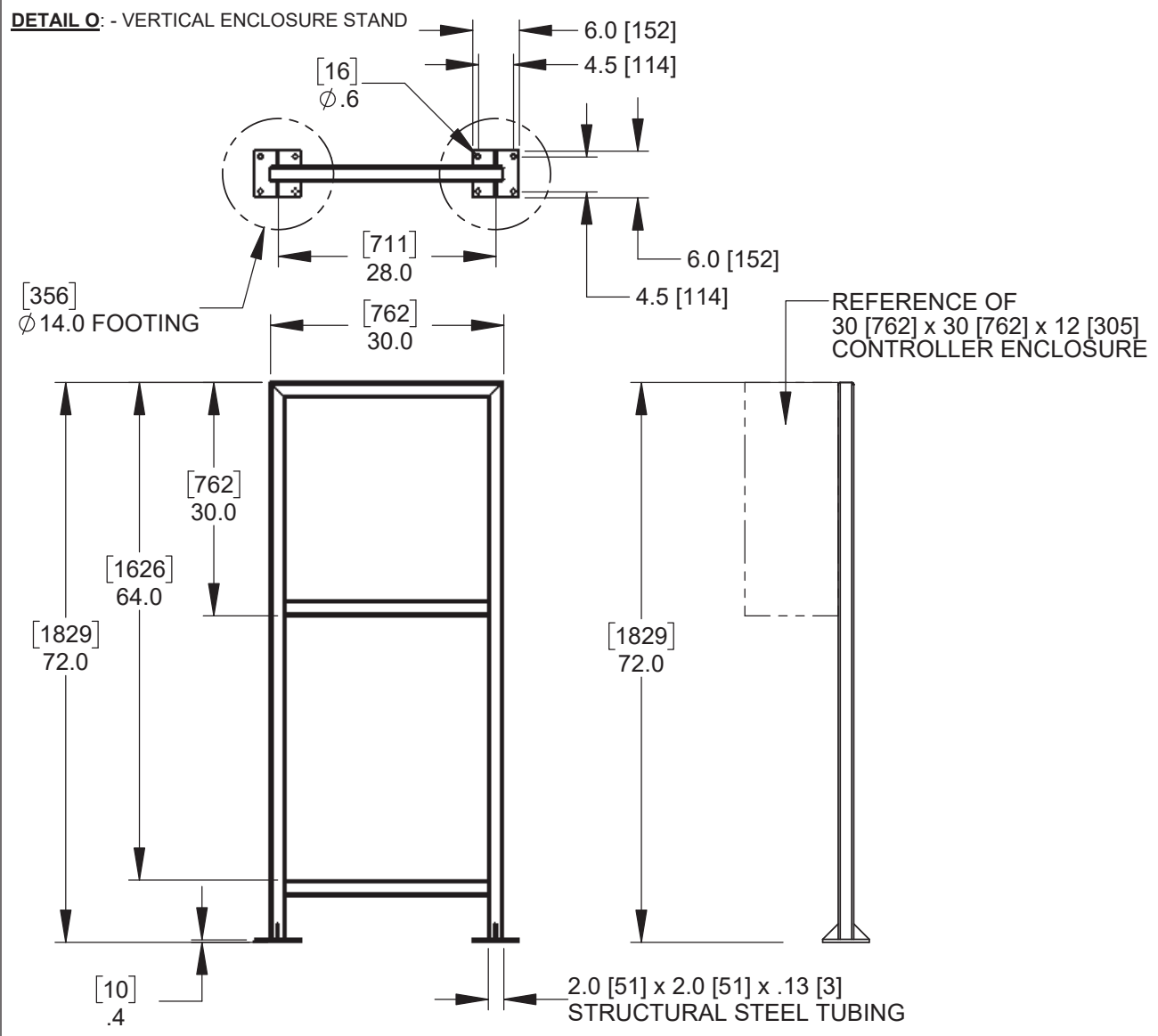
OPTIONAL CONTROLLER ENCLOSURE STAND.
 SEE SHEET 7 FOR DETAILS
 CONTROLLER ENCLOSURE IS RECOMMENDED
 TO BE INSTALLED WITHIN 20' [6096] OF PRIMARY COLUMN
 AT LEAST 6' [1829] AWAY FROM MOVING GATE PANEL.

NOTE:
 BOLLARD FOUNDATION LOCATIONS ARE SUPPLIED AS A REFERENCE ONLY.
 ALL FINAL MATERIALS AND DIMENSIONS ARE SUPPLIED AND INSTALLED BY OTHERS.

WALLACE
 PERIMETER SECURITY

115 Lawson Crescent
 Winnipeg, Manitoba, Canada, R3P 1A6
 Phone: 1-866-300-1110
 Fax: 1-204-284-1868
 Web: www.wallaceperimetersecurity.com

Description:		PDDT POST DRIVE TOP TRACK SPEEDGATE GENERIC GATE LAYOUT	
Customer / Project Name:			
Finish:	Date:		3/9/2018
Drawing No.	Rev.	Sheet:	
PDDT-03-09-18		5 of 6	



WALLACE PERIMETER SECURITY
115 Lawson Crescent
Winnipeg, Manitoba, Canada, R3P 1A6
Phone: 1-866-300-1110
Fax: 1-204-284-1868
Web: www.wallaceperimetersecurity.com

Description: PDDT POST DRIVE TOP TRACK SPEEDGATE CONTROLLER ENCLOSURE STANDS PEDESTAL HEADS / PEDESTAL STANDS	
Customer / Project Name:	
Finish:	Date: 3/21/2019
Drawing No. PDDT-03-09-18	Rev. Sheet: 6 of 6