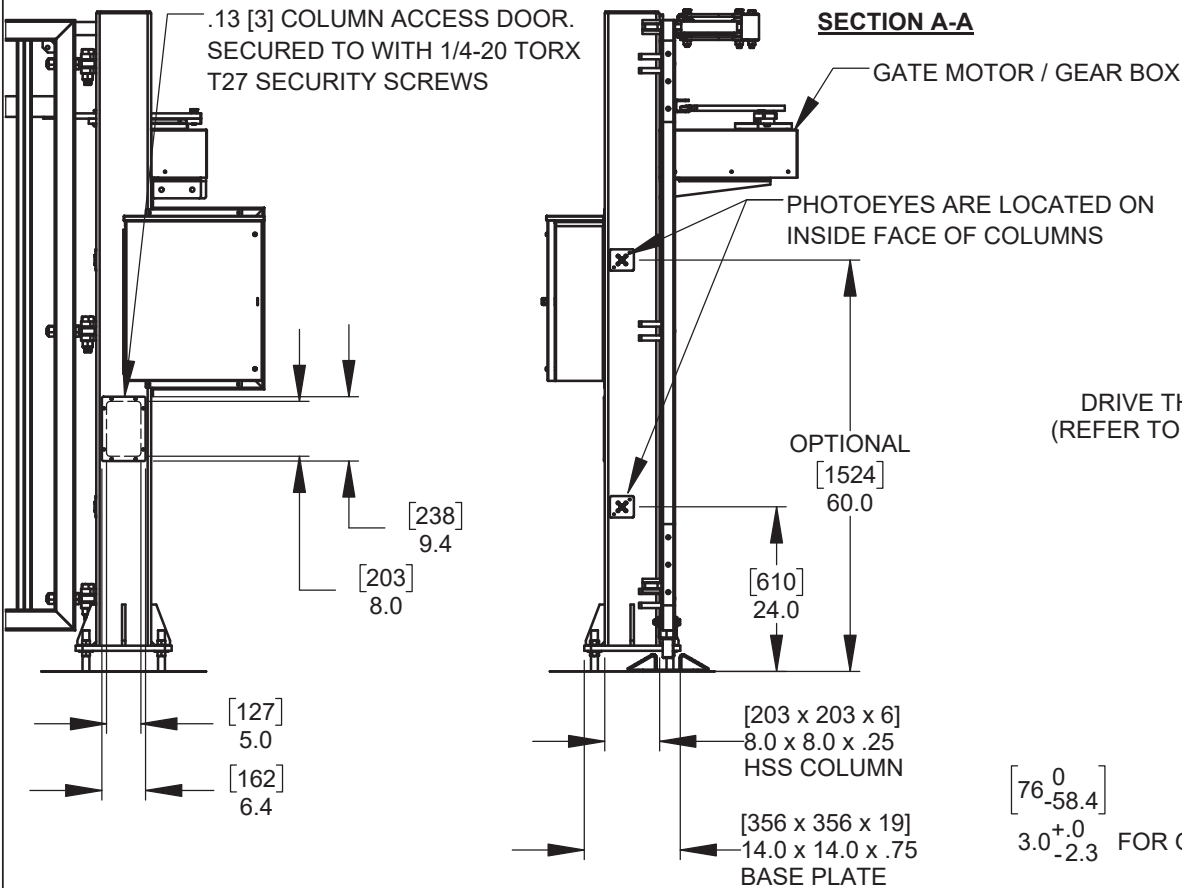


DETAIL A - VERTICAL PANEL CATCH

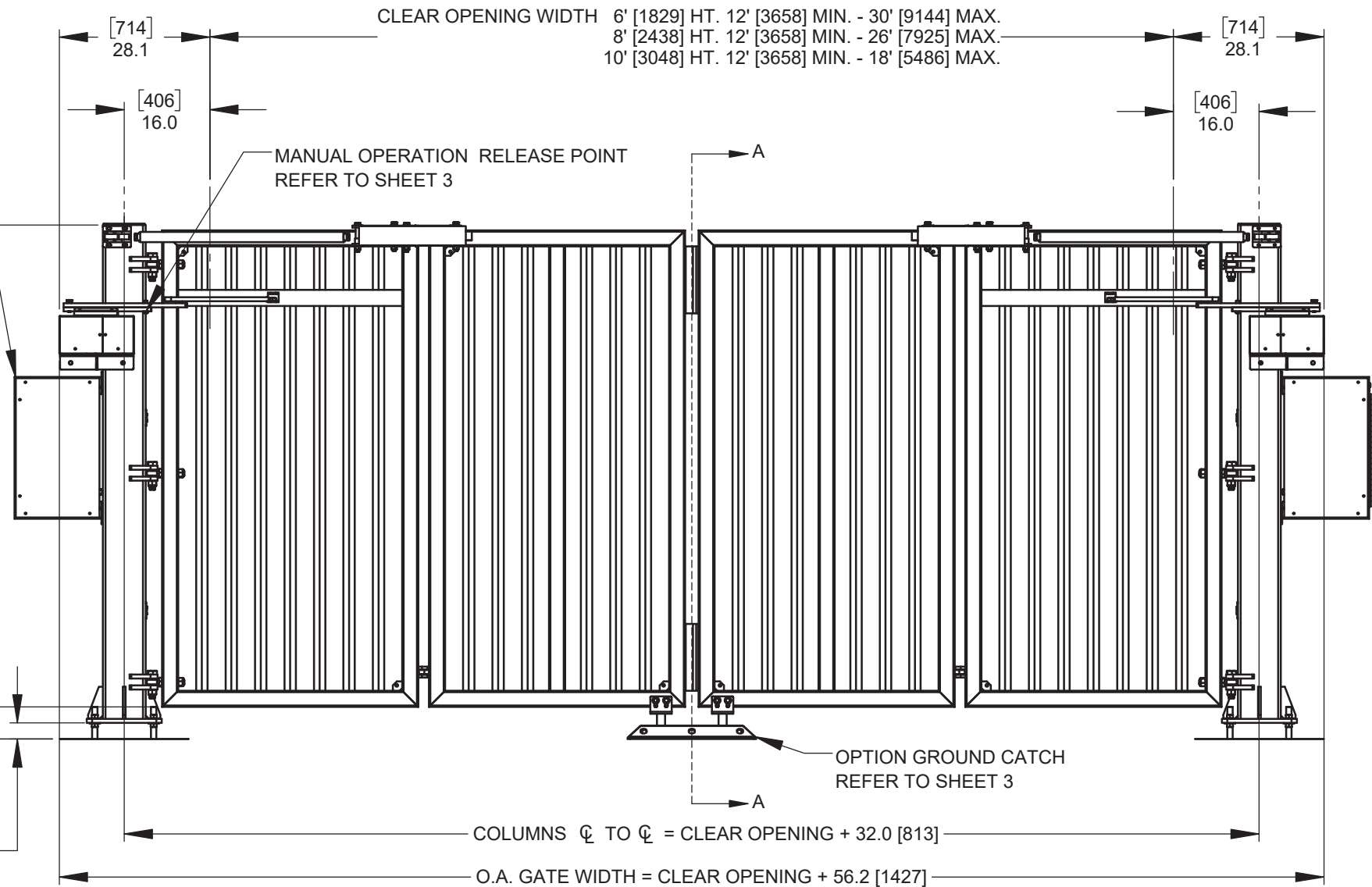
.13 [3] STEEL CATCH — NYLON CATCH BLOCK

ELECTRICAL CONTROLLERS ARE MOUNTED IN A 24" [610] x 20" [508] x 8 [203] NEMA 3R ENCLOSURE. (1 PER GATE OPERATOR)  
**POWER REQUIREMENTS: 115VAC / 230 VAC, SINGLE PHASE, 20A**  
ENCLOSURES MUST BE MOUNTED WITHIN 10' [3048] OF GATE MOTOR / GEAR BOX.  
ENCLOSURES ARE SHOWN IN RECOMMENDED COLUMN MOUNTING LOCATION USING SUPPLIED MOUNTING BRACKETS.



DRIVE THRU HEIGHTS  
(REFER TO CHART BELOW)

[76<sup>0</sup><sub>-58.4</sub>] 3.0<sup>+0</sup><sub>-2.3</sub> FOR GATE LEVELING



**NOTES:**

DIMENSIONS ARE IN INCHES, DIMENSIONS SHOWN IN [ ] ARE IN MILLIMETERS.

**FINISH NOTES:**

STANDARD FINISH: HOT DIPPED GALVANIZED ON ALL STEEL COMPONENTS

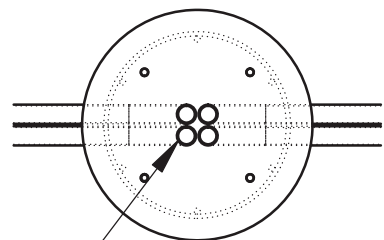
OPTIONAL FINISH: POWDER COAT PAINT, CUSTOM COLORS AVAILABLE  
RAL # MUST BE SPECIFIED AT TIME OF ORDER

DRIVE THRU HEIGHTS	
6ft	72" [1829]
8ft	96" [2438]
10ft	120" [3048]

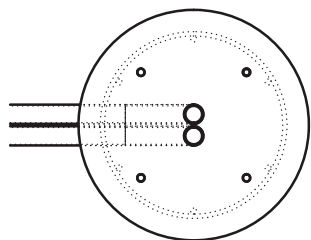


115 Lowson Crescent  
Winnipeg, Manitoba, Canada, R3P 1A6  
Phone: 1-866-300-1110  
Fax: 1-204-284-1868  
Web: www.wallaceperimetersecurity.com

Description: <b>FOLDSMART XT TRACKLESS BI-FOLDING GATE SYSTEM STANDARD DIMENSIONS</b>		
Customer / Project Name:		
Finish: <b>SEE FINISH NOTES</b>	Date: <b>4/13/2020</b>	
Drawing No. <b>FSXT-01-30-19</b>	Rev. <b>B</b>	Sheet: <b>1 of 5</b>



4 PCES. 1" [25] CONDUIT - BY OTHERS  
2 IN PRIMARY COLUMN, FROM INCOMING  
POWER SUPPLY / ACCESS CONTROL.  
2 IN SECONDARY COLUMN FROM PRIMARY  
COLUMN.



**NOTE:**  
PRIMARY COLUMN IS THE COLUMN  
WITH INCOMING POWER AND ACCESS  
CONTROL CONDUIT.

.75 [19] HILTI HAS 5.8 x 14" [356] ANCHOR BOLTS  
ADHESIVE: HILTI HVU OR APPROVED EQUIVALENT

REINFORCING STEEL:  
10M  $\phi$  19 [493] REBAR RINGS SPACED @ 12 [305] O/C  
DOUBLE RINGS AT TOP. 8 - 15M REBAR VERTICALS

CONCRETE TYPE 50 32 Mpa OR LOCAL  
EQUIVALENT. THE TOP 72.0 [1828] OF  
FOUNDATION TO BE ENCASED IN  $\phi$  24.0" [610]  
SONO TUBE.  
RECOMMENDED FOUNDATION DEPTH IS 36.0 [914]  
BELOW LOCAL FROST LINE.  
MINIMUM FOUNDATION DEPTH 96.0" [2438]

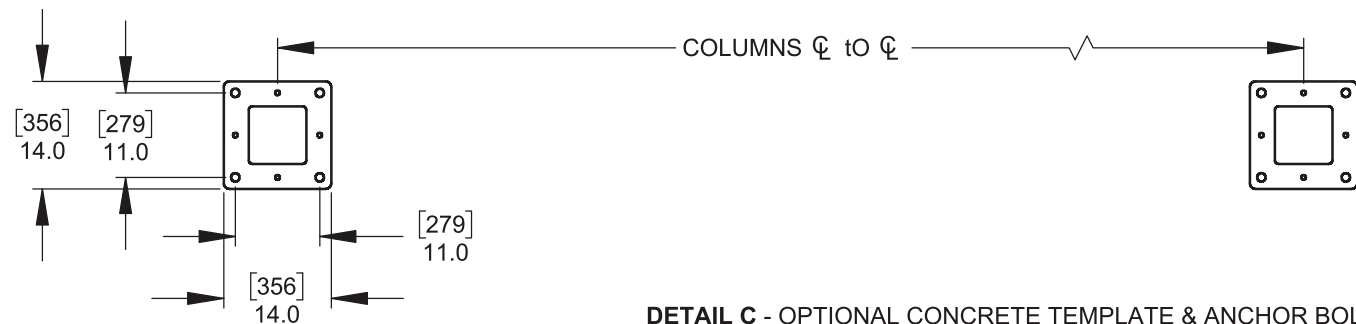
[305]  
12.0

RECOMMENDED CONDUIT DEPTH 36.0 [914]  
TO SUIT FACTORY SUPPLIED WIRE HARNESS  
CONDUIT DEPTH CAN BE INCREASED TO SUIT  
LOCAL CODE REQUIREMENTS. MUST BE SPECIFIED  
AT TIME OF ORDER. REFER TO CONTROLLER NOTE  
FOR MAX. WIRE HARNESS LENGTH.

INCOMING POWER  
/ ACCESS CONTROL

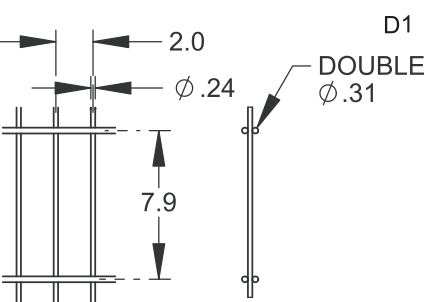
TO SECONDARY  
GATE COLUMN

**DETAIL B** - COLUMN FOUNDATIONS



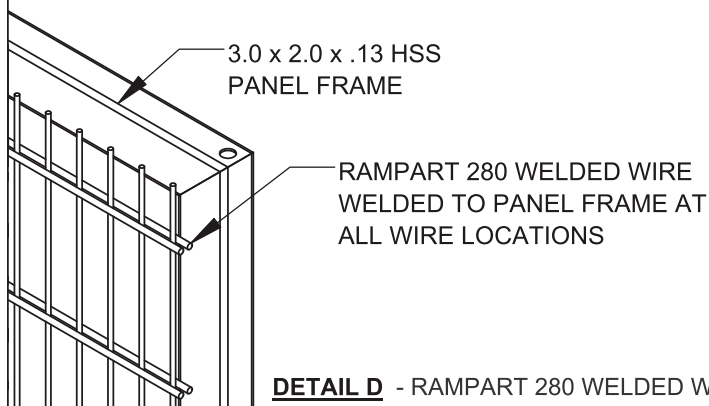
**DETAIL C** - OPTIONAL CONCRETE TEMPLATE & ANCHOR BOLT KIT

**DETAIL D1**



GATES LARGER THAN 20' [6M]  
WILL HAVE ADDITIONAL VERTICAL  
2.0 [51] x 3.0 [76] x .13 [3] HSS  
WELDED @  $\phi$  OF PANEL

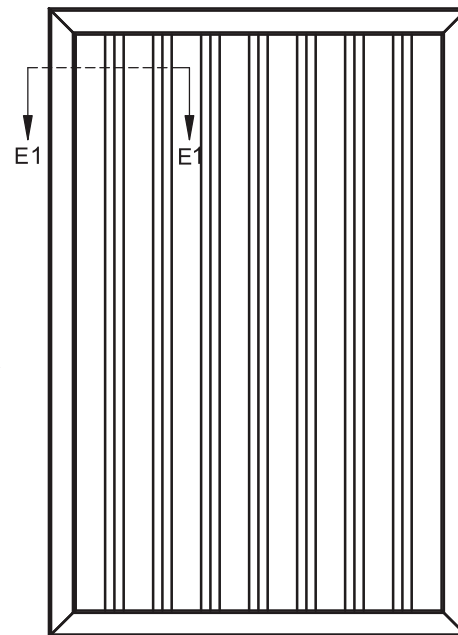
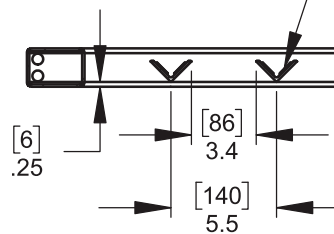
**DETAIL D2**



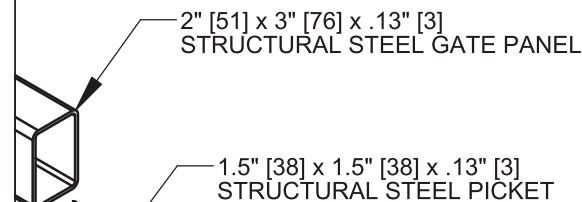
**DETAIL D** - RAMPART 280 WELDED WIRE INFILL

**DETAIL E1**

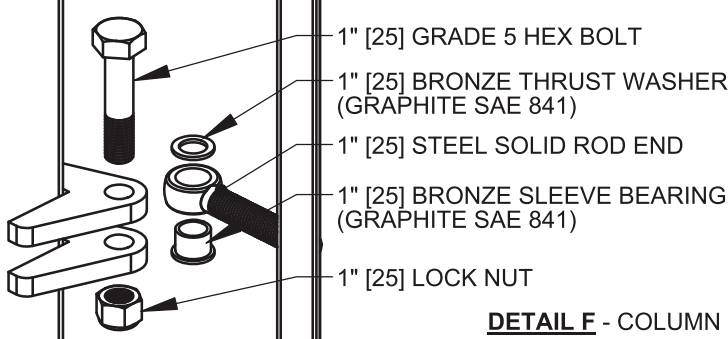
PICKETS ARE WELDED  
TO GATE PANEL ON  
INNER FACE OF PICKET



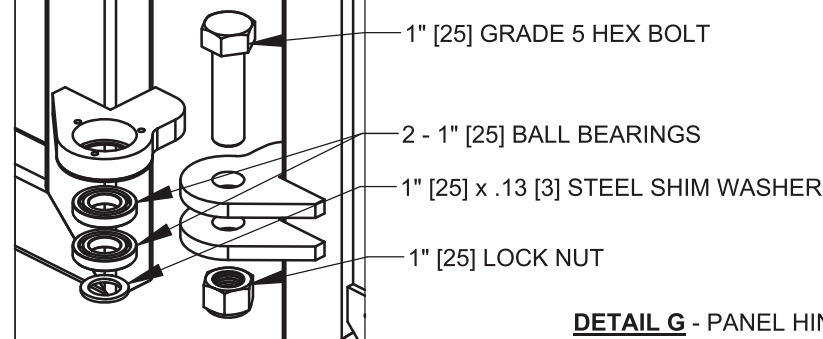
**DETAIL E2**



**DETAIL E** - VERTICAL PICKET INFILL



**DETAIL F** - COLUMN HINGE



**DETAIL G** - PANEL HINGE

**INCLUDED WITH FOLDSMART**

- 2 - ELECTRICAL OPERATORS MOUNTED IN 24" [610] x 20" [508] x 8" [203] NEMA 3R ENCLOSURES.
- KEY FOR MANUAL PANEL RELEASE

**OPTIONS:**

- CONCRETE TEMPLATE & ANCHOR BOLT KIT
- VEHICLE DETECTION LOOP RELAYS
- VEHICLE DETECTION LOOPS, DIRECT BURIAL OR SAW CUT
- SURFACE MOUNTED CENTER CATCH
- 4" [102] RED / GREEN LED TRAFFIC LIGHT
- AMBER STROBE LIGHT
- ALUMINUM SERRATED ANTI - CLIMB
- BARBED WIRE



115 Lowson Crescent  
Winnipeg, Manitoba, Canada, R3P 1A6  
Phone: 1-866-300-1110  
Fax: 1-204-284-1868  
Web: www.wallaceperimetersecurity.com

Description:

**FOLDSMART XT  
TRACKLESS BI-FOLDING GATE SYSTEM  
STANDARD DIMENSIONS**

Customer / Project Name:

Finish:

SEE SHEET 1

Drawing No.

**FSXT-01-30-19**

Rev.

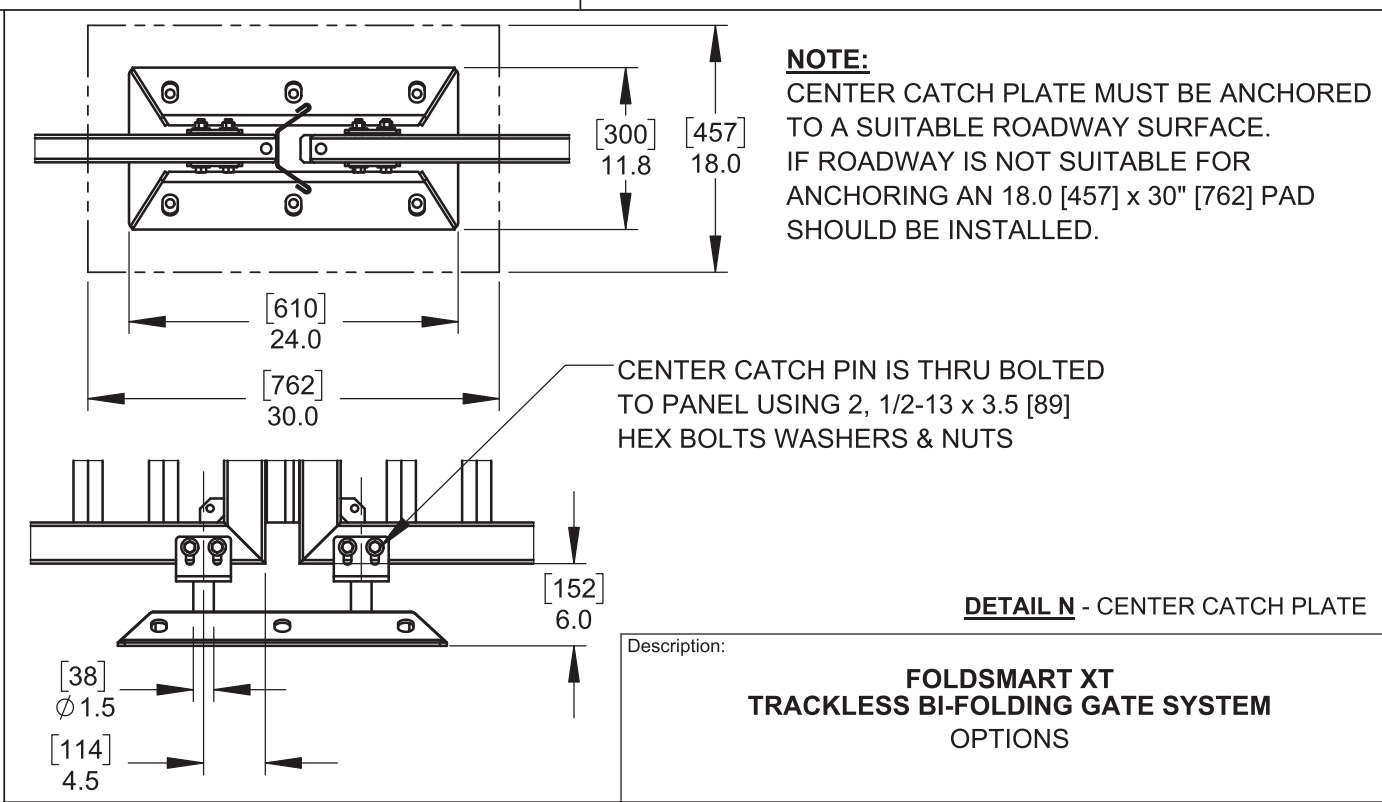
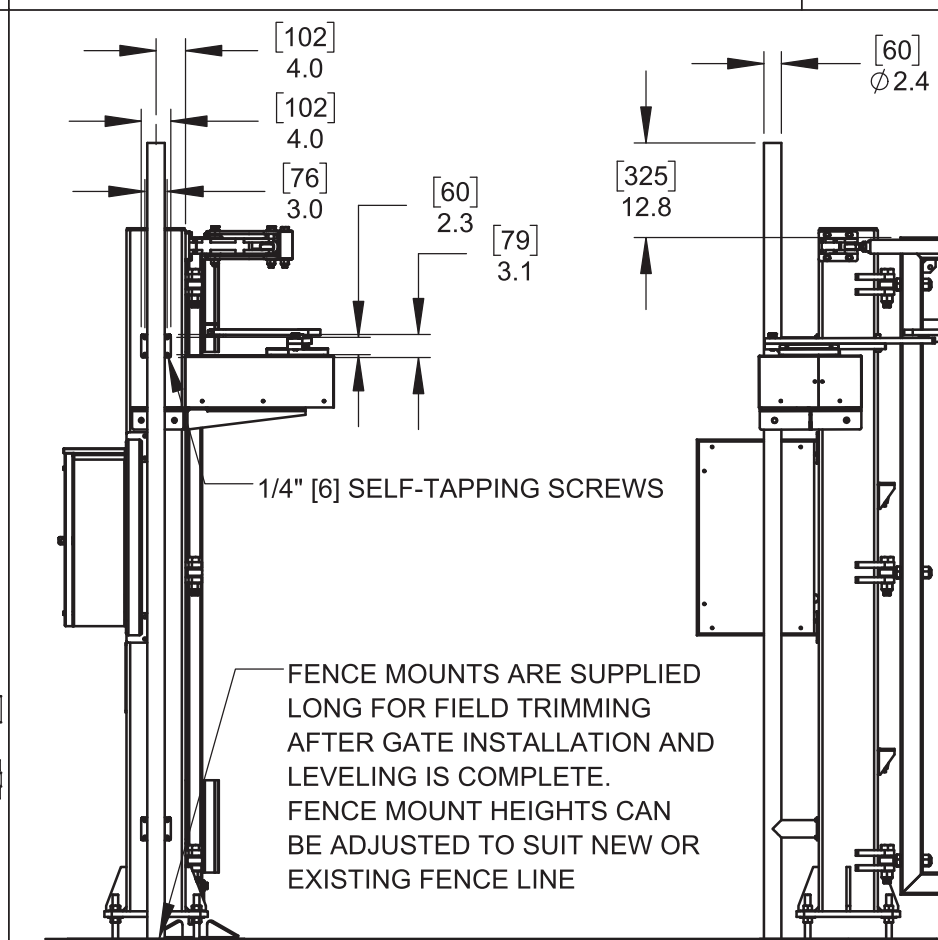
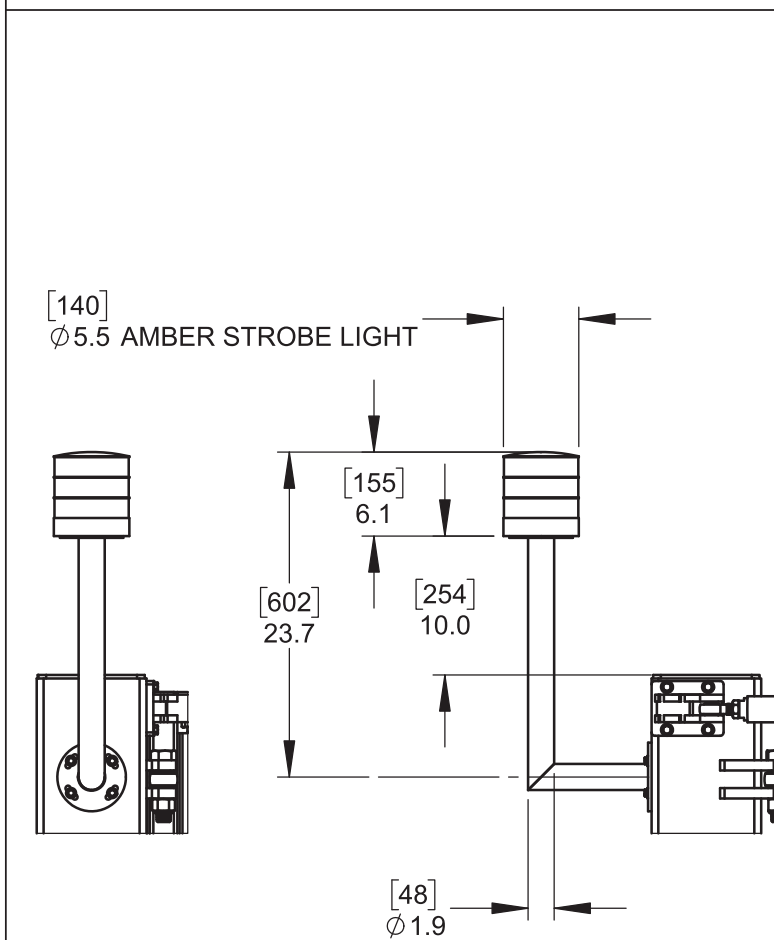
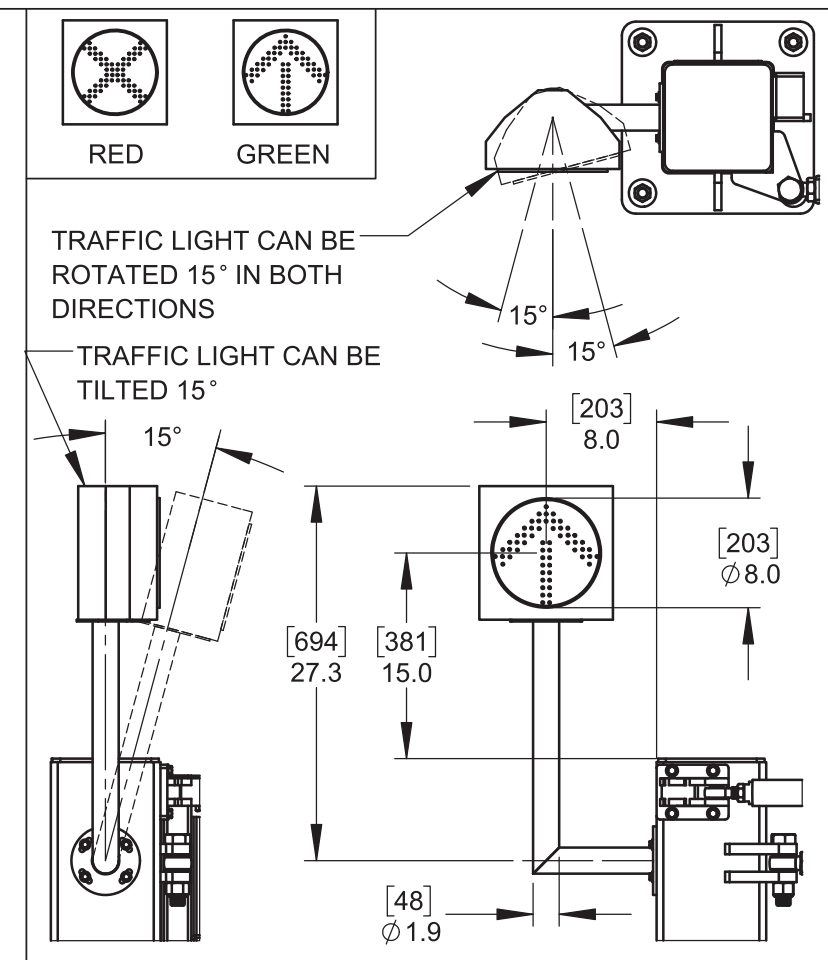
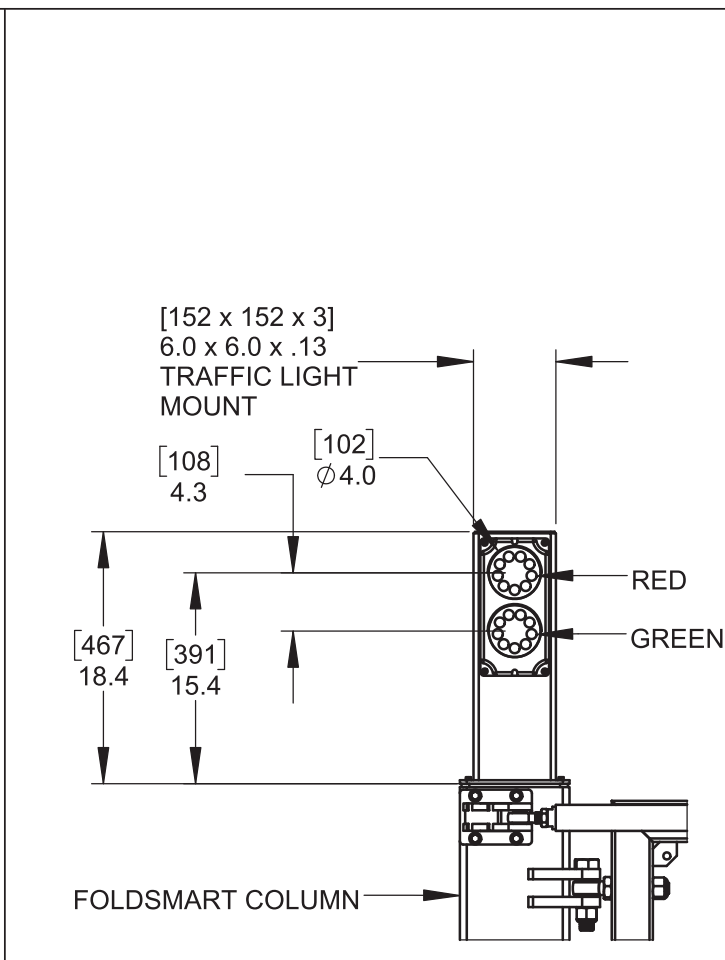
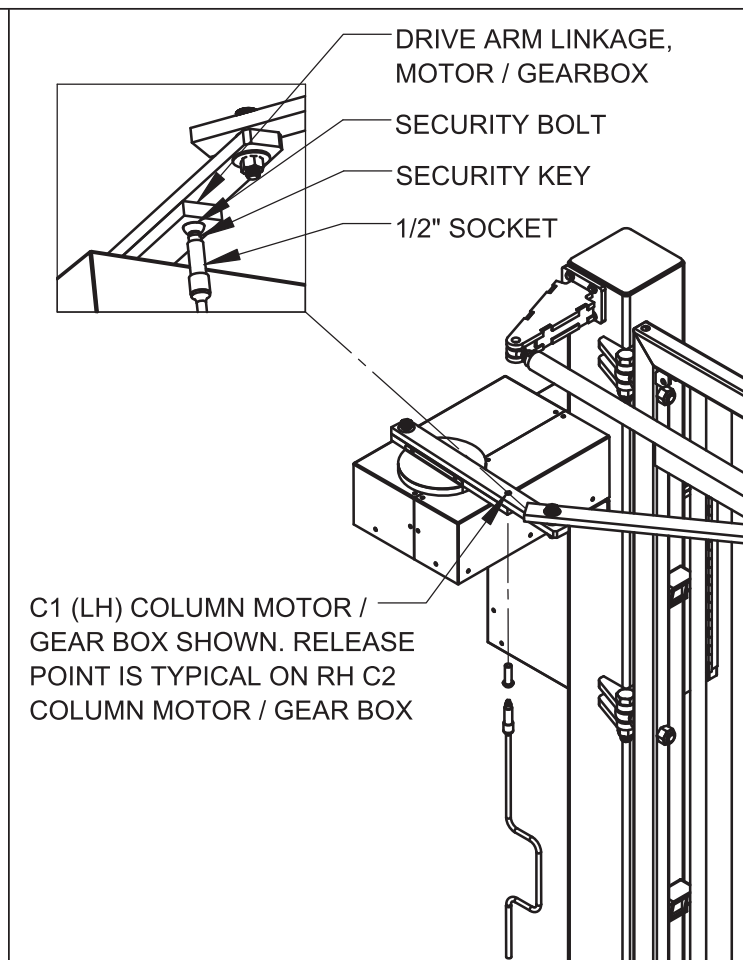
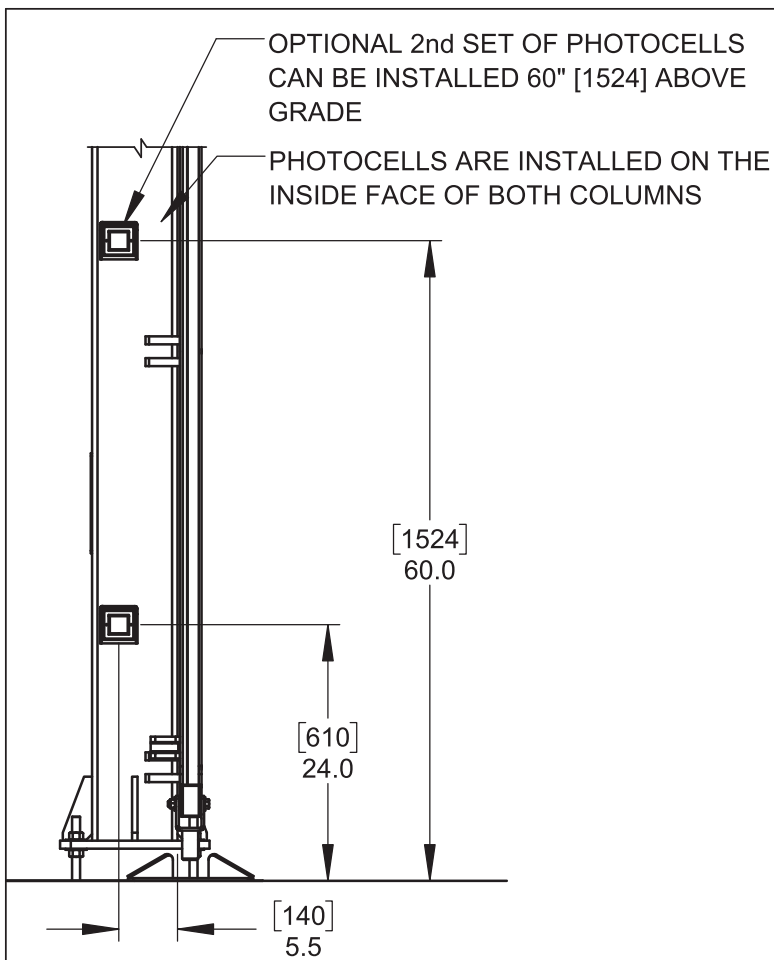
**B**

Date:

1/30/2019

Sheet:

2 of 6



**NOTE:**  
CENTER CATCH PLATE MUST BE ANCHORED  
TO A SUITABLE ROADWAY SURFACE.  
IF ROADWAY IS NOT SUITABLE FOR  
ANCHORING AN 18.0 [457] x 30" [762] PAD  
SHOULD BE INSTALLED.

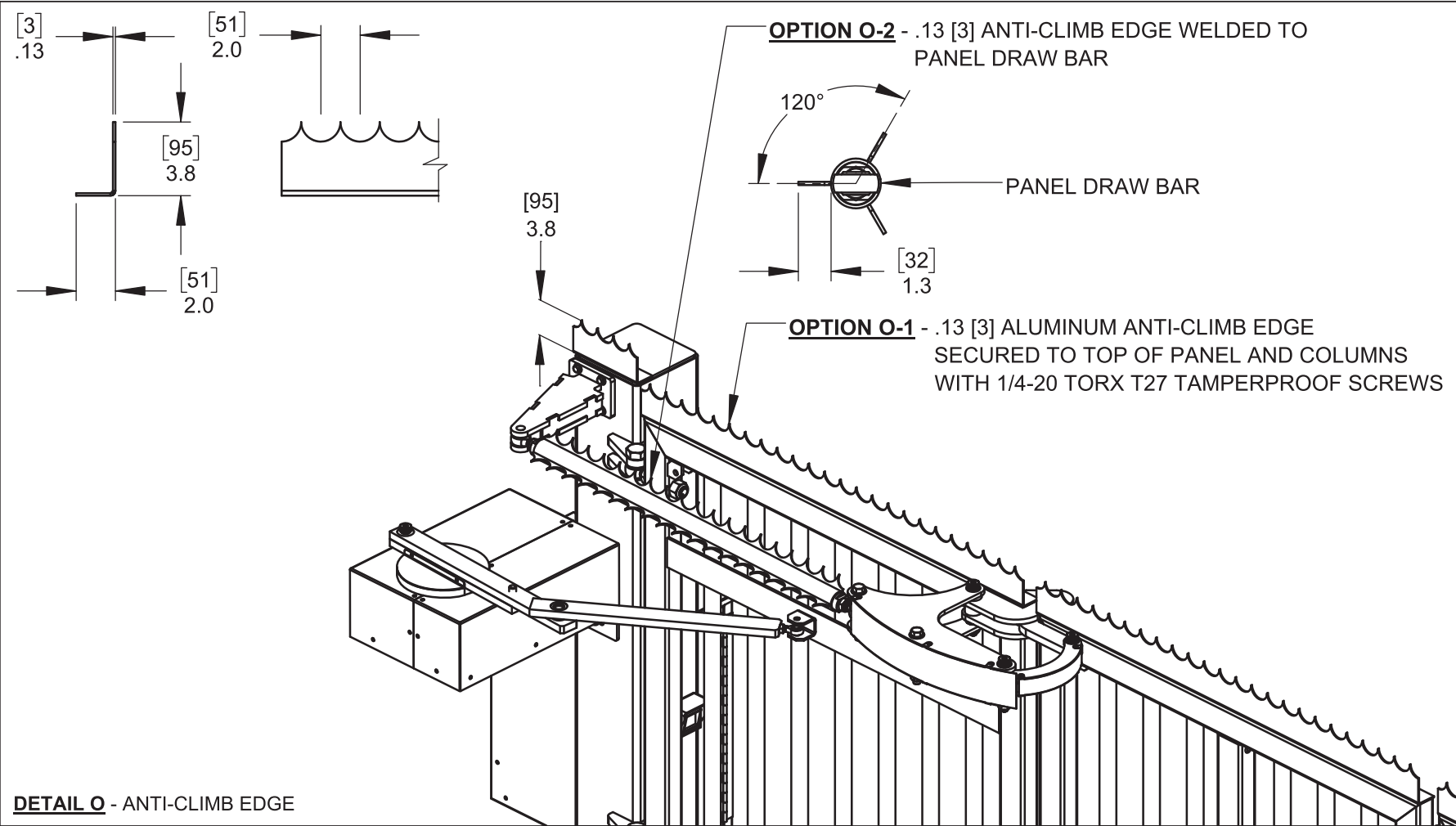
— CENTER CATCH PIN IS THRU BOLTED  
TO PANEL USING 2, 1/2-13 x 3.5 [89]  
HEX BOLTS WASHERS & NUTS



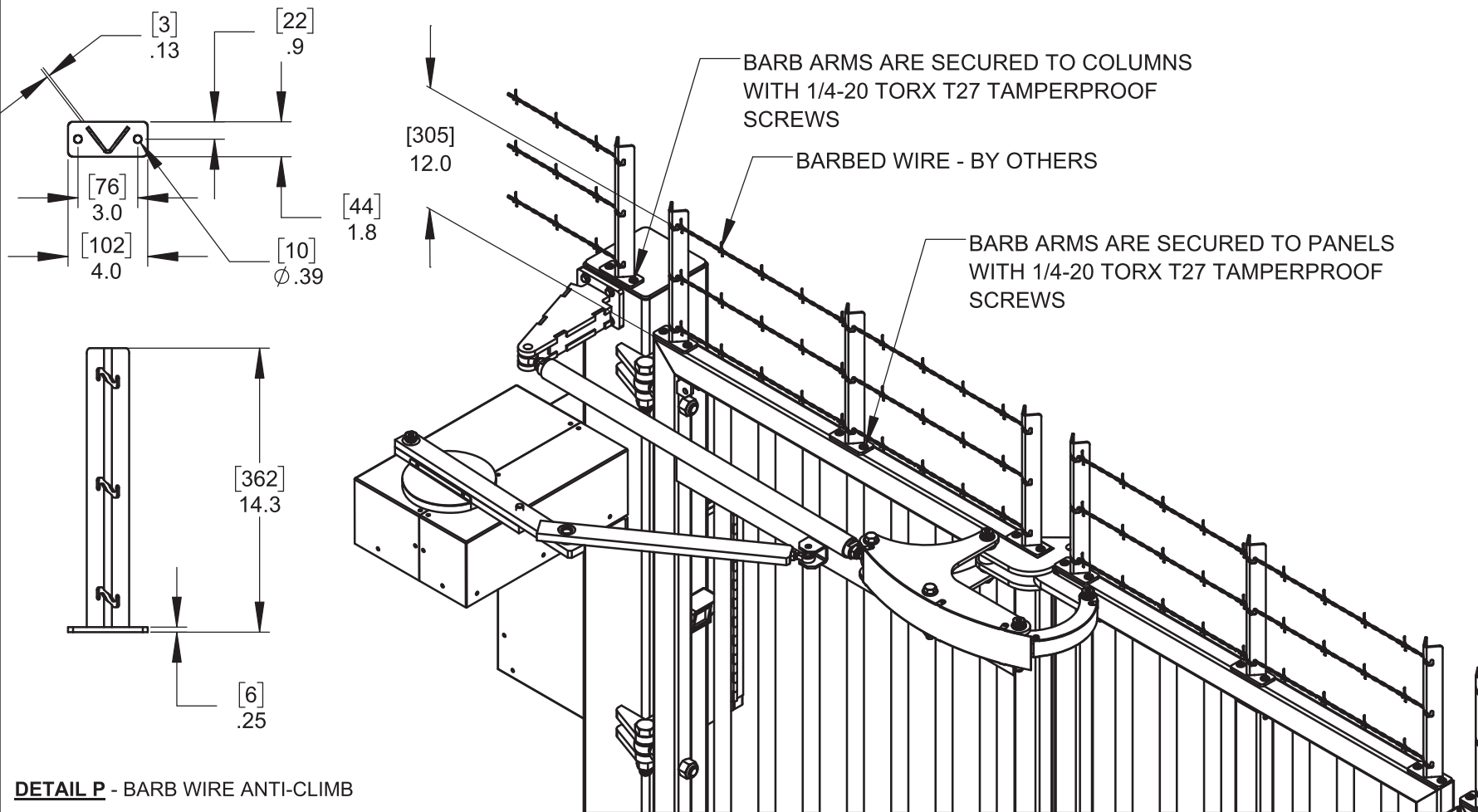
**WALLACE**  
PERIMETER SECURITY

115 Lowson Crescent  
Winnipeg, Manitoba, Canada, R3P 1A6  
Phone: 1-866-300-1110  
Fax: 1-204-284-1868  
Web: [www.wallaceperimetersecurity.com](http://www.wallaceperimetersecurity.com)

Description:		
<p style="text-align: center;"><b>FOLDSMART XT TRACKLESS BI-FOLDING GATE SYSTEM OPTIONS</b></p>		
Customer / Project Name:		
Finish:	Date:	
SEE SHEET 1	1/30/2019	
Drawing No.	Rev.	Sheet:
<b>FSXT-01-30-19</b>	<b>B</b>	<b>3 of 6</b>



**DETAIL O - ANTI-CLIMB EDGE**

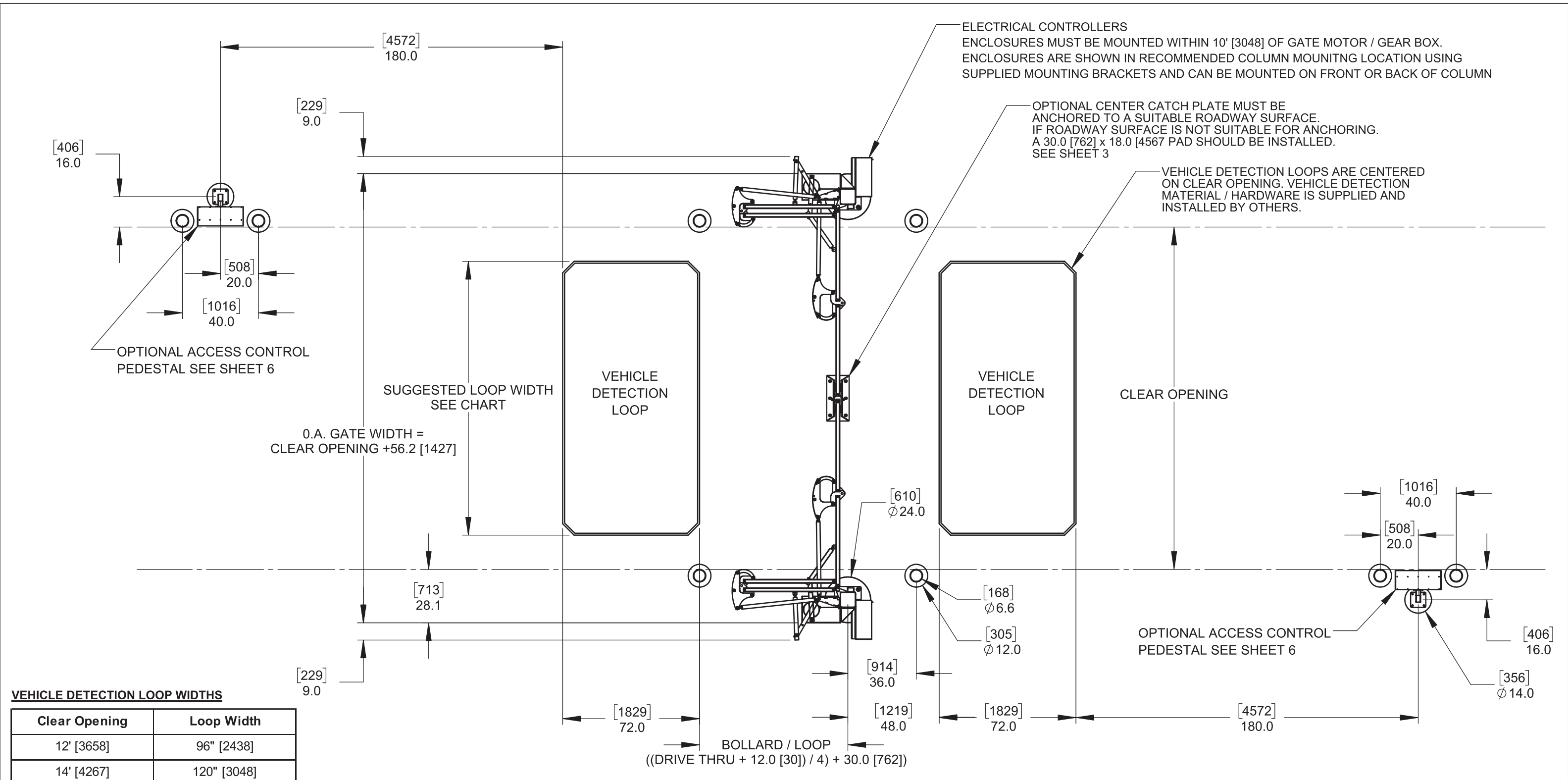


**DETAIL P - BARB WIRE ANTI-CLIMB**



115 Lowson Crescent  
Winnipeg, Manitoba, Canada, R3P 1A6  
Phone: 1-866-300-1110  
Fax: 1-204-284-1868  
Web: [www.wallaceperimetersecurity.com](http://www.wallaceperimetersecurity.com)

Description:			
<b>FOLDSMART XT TRACKLESS BI-FOLDING GATE SYSTEM OPTIONS</b>			
Customer / Project Name:			
Finish:		Date:	
SEE SHEET 1		1/30/2019	
Drawing No.	Rev.	Sheet:	
<b>FSXT-01-30-19</b>	<b>B</b>	4 of 6	



VEHICLE DETECTION LOOP WIDTHS

Clear Opening	Loop Width
12' [3658]	96" [2438]
14' [4267]	120" [3048]
16' [4877]	144" [3658]
18' [5486]	168" [4267]
20' [6096]	192" [4877]
22' [6706]	216" [5486]
24' [7315]	240" [6096]
26' [7925]	264" [6706]
28' [8534]	288" [7315]
30' [9144]	312" [7925]

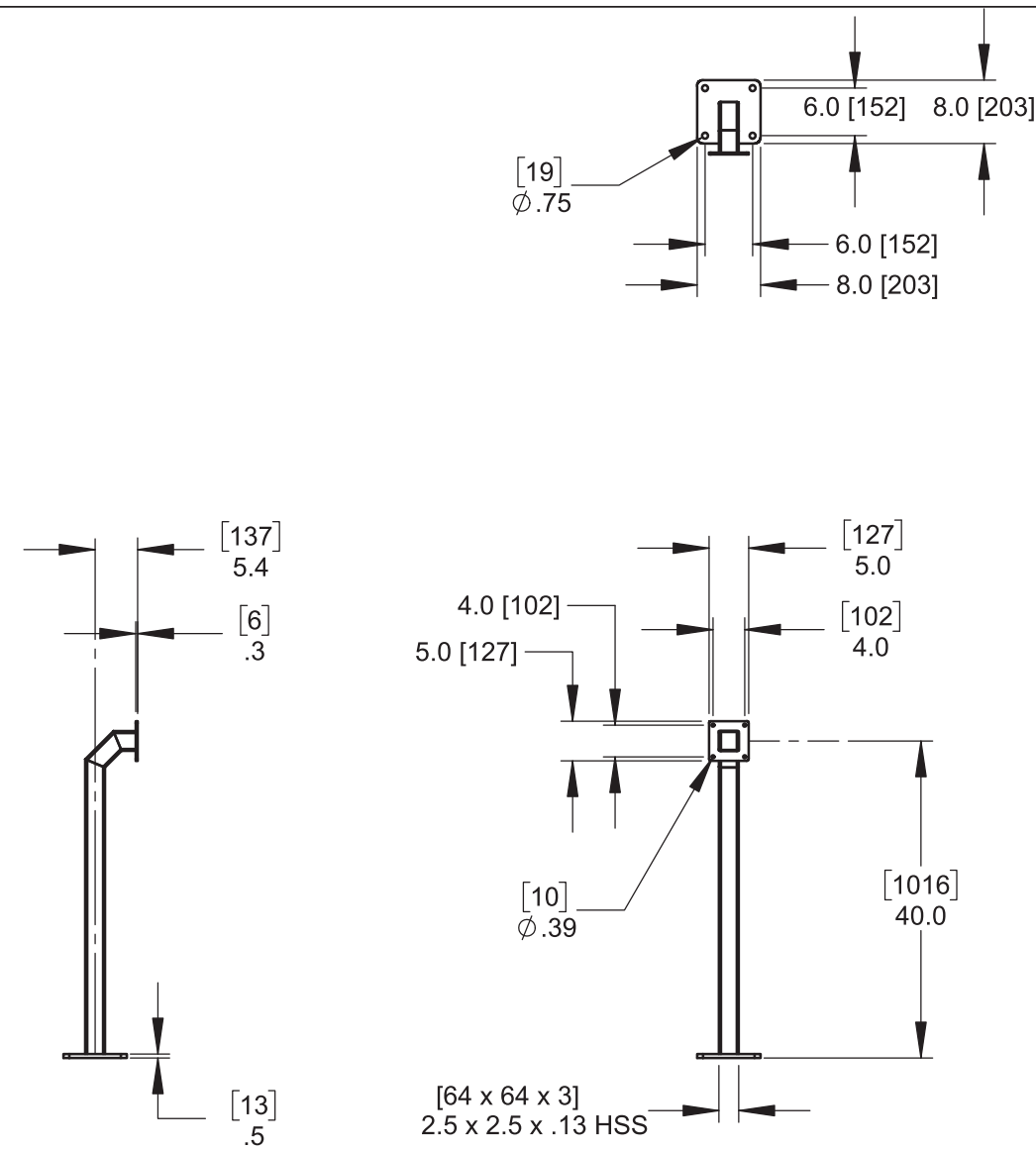
**NOTE:**  
BOLLARDS ARE SHOWN AS A REFERENCE ONLY. ALL FINAL DIMENSIONS  
AND MATERIALS ARE SUPPLIED AND INSTALLED BY OTHERS



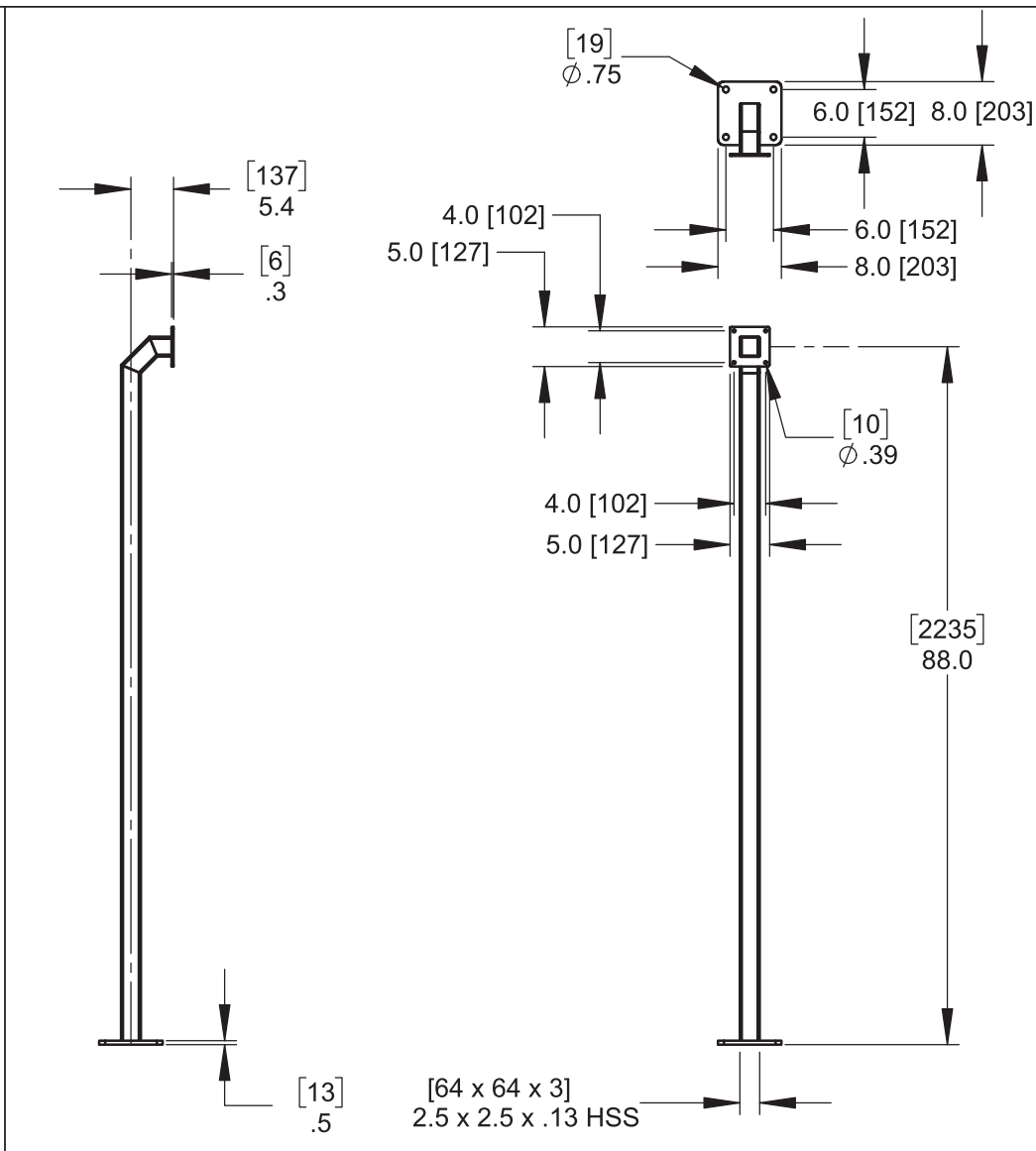
115 Lawson Crescent  
Winnipeg, Manitoba, Canada, R3P 1A6  
Phone: 1-866-300-1110  
Fax: 1-204-284-1868  
Web: www.wallaceperimetersecurity.com

Description: <b>FOLDSMART XT TRACKLESS BI-FOLDING GATE SYSTEM GENERIC SITE LAYOUT</b>		
Customer / Project Name:		
Finish: <b>SEE SHEET 1</b>	Date: <b>1/30/2019</b>	
Drawing No. <b>FSXT-01-30-19</b>	Rev. <b>B</b>	Sheet: <b>5 of 6</b>

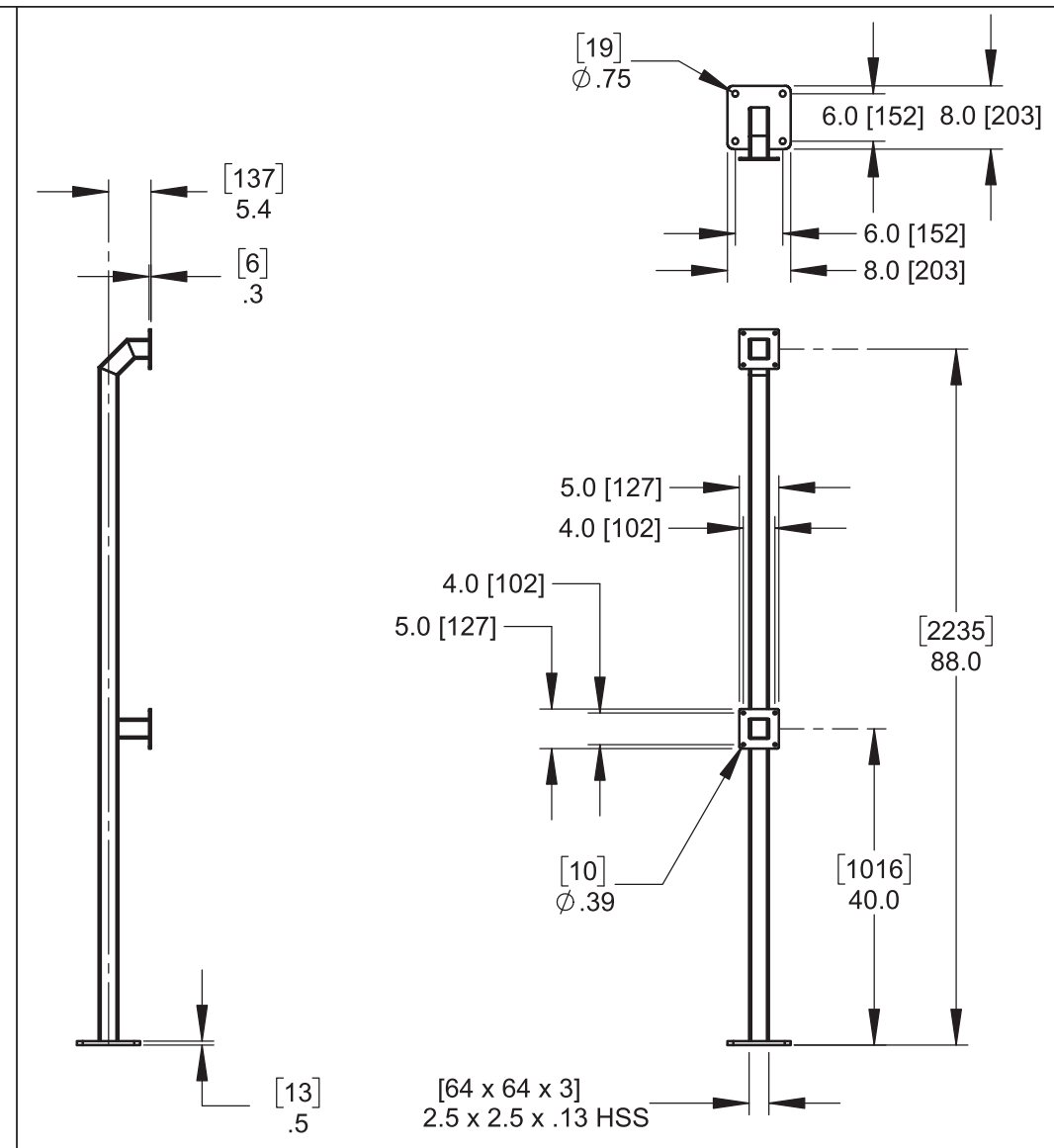




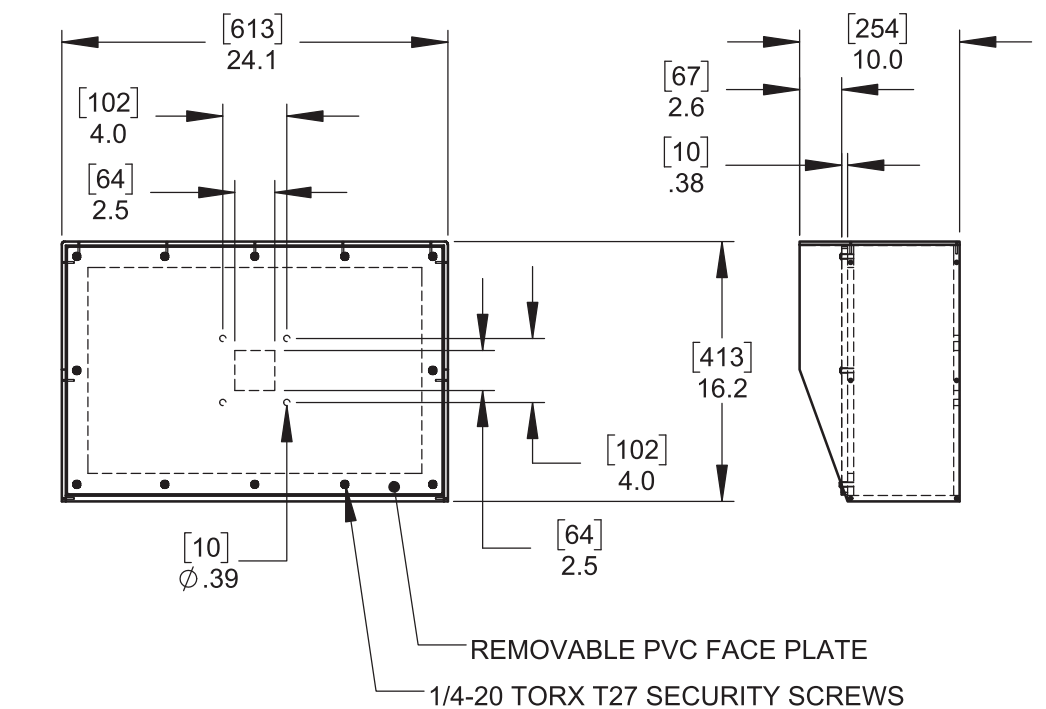
**DETAIL Q-1** - SINGLE HEIGHT PEDESTAL STAND 40.0" [1016]



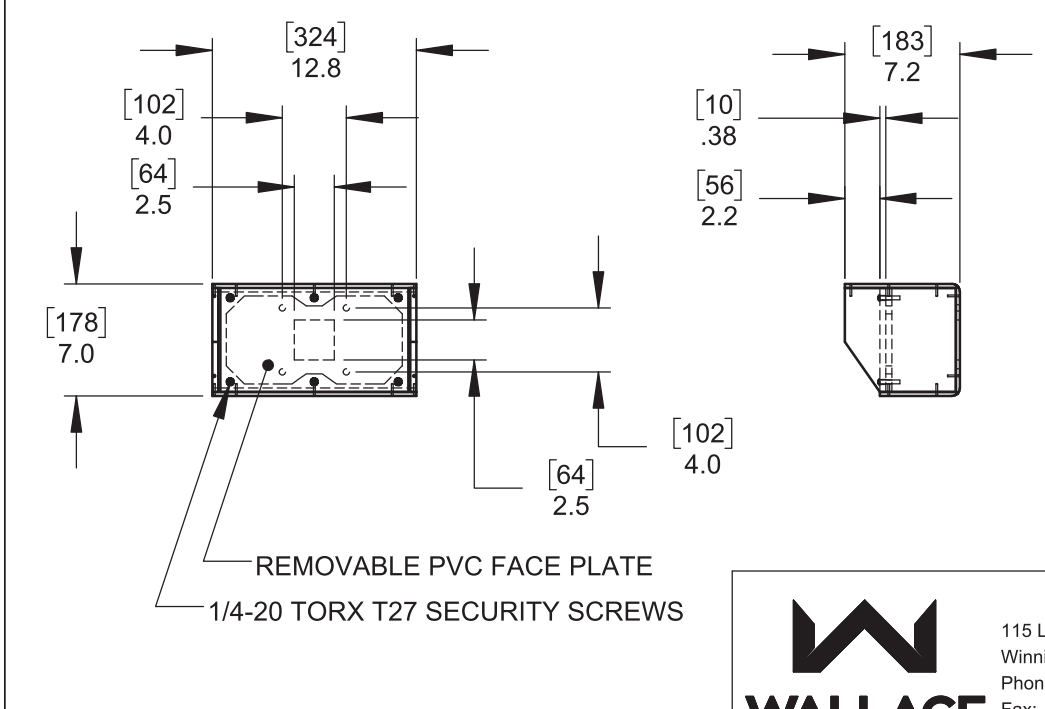
**DETAIL Q-2** - SINGLE HEIGHT PEDESTAL STAND 88.0" [2235]



**DETAIL Q-3** - DUAL HEIGHT PEDESTAL STAND 40.0" [1016] / 88.0" [2235]



**DETAIL R-1** - LARGE POLYCARBONATE PEDESTAL HEAD



**DETAIL R-2** - SMALL POLYCARBONATE PEDESTAL HEAD



**WALLACE**  
PERIMETER SECURITY

115 Lowson Crescent  
Winnipeg, Manitoba, Canada, R3P 1A6  
Phone: 1-866-300-1110  
Fax: 1-204-284-1868  
Web: [www.wallaceperimetersecurity.com](http://www.wallaceperimetersecurity.com)

Description:		
<b>FOLDSMART XT TRACKLESS BI-FOLDING GATE SYSTEM OPTIONAL ACCESS CONTROL PEDESTALS</b>		
Customer / Project Name:		
Finish:	Date:	
	1/30/2019	
Drawing No.	Rev.	Sheet:
<b>FSXT-01-30-19</b>	<b>B</b>	<b>6 of 6</b>